

[ABOUT US](#)[MEMBER CENTRE](#)[EVENTS](#)[NEWS & INSIGHTS](#)[INVEST & ENGAGE](#)[RESEARCH TOOLS](#)

## Advanced compare

You are here: [Home](#) » [Compare investment companies](#) » Advanced compare



The Association of  
Investment Companies

Previous month end data will be available on the 7th working day of each month.

[PDF  
Archive](#)

### Data as at: 31/10/2023

Please note, some investment companies release their Net Asset Values (NAVs) less frequently than daily. For example they may provide NAVs on a weekly, monthly, quarterly or even semi-annual basis. This means that the estimated NAV shown below, and the associated returns and discount/premium to market price, will not necessarily reflect recent market movements. **This includes all historical data held both in Advanced Compare and the PDF archive.** The latest month end information will be made available on or around the 7th working day of each month. Performance is in the traded currency of the company.

Company name	Management group	AIC sector	Traded currency	Total assets (m)	Last close price	NAV	Discount / premium (%)	Gearing (%)	SPTR 1yr (%)	SPTR 3yr (%)	SPTR 5yr (%)	SPTR 10yr (%)	NAVTR 1yr (%)	NAVTR 3yr (%)	NAVTR 5yr (%)	NAVTR 10yr (%)	5yr div grth (%pa)	Div yld (%)
Industry average	-	Industry average	-	-	-	-	-16.33	7	3.90	22.59	43.88	153.95	3.78	33.32	62.54	165.23	4.82	3.78
Industry average ex VCTs	-	Industry average ex VCTs	-	-	-	-	-16.65	7	4.17	22.64	44.46	156.53	4.00	33.82	63.64	168.09	5.04	3.67
Industry average VCTs only	-	Industry average VCTs only	-	-	-	-	-6.14	0	-4.47	20.75	25.43	72.00	-4.64	14.09	20.58	56.07	-1.98	7.30
Global	Weighted average	Global	-	-	-	-	-12.86	8	-4.52	-2.82	35.11	186.53	-0.45	4.94	54.37	213.63	7.45	1.39
Alliance Trust	Willis Towers Watson	Global	GBX	3,223.51	997.00	1,063.50	-6.25	4	7.31	32.07	52.34	175.77	8.07	33.24	50.84	151.08	12.77	2.53
AVI Global Trust	Asset Value Investors	Global	GBX	1,107.80	190.00	214.81	-11.55	8	5.11	37.27	46.39	133.64	6.65	37.86	48.19	126.70	6.58	1.74
Bankers Investment Trust	Janus Henderson Investors	Global	GBX	1,449.91	93.50	107.36	-12.91	9	-0.74	1.91	25.06	103.73	5.17	17.94	39.24	132.74	4.59	2.49
Brunner Investment Trust	Allianz Global Investors	Global	GBX	521.66	996.00	1,186.25	-16.04	3	4.71	39.20	53.77	147.55	10.27	46.41	58.67	149.47	5.44	2.28
F&C Investment Trust	Columbia Threadneedle	Global	GBX	5,232.12	847.00	949.96	-10.84	5	-4.08	29.03	36.39	167.24	3.29	32.78	51.69	166.37	5.36	1.59
Keystone Positive Change	Baillie Gifford	Global	GBX	153.53	185.50	223.29	-16.92	10	-7.53	-20.72	-32.13	-24.26	-5.72	-20.95	-29.38	-14.14	-48.46	2.16
Lindsell Train Investment Trust	Lindsell Train	Global	GBP	193.08	831.00	946.34	-12.19	0	-11.44	-12.85	-16.82	209.80	-0.80	2.54	40.39	324.03	19.32	6.20
Manchester & London	M&L Capital Management	Global	GBX	216.88	423.00	539.60	-21.61	0	24.88	-26.30	11.39	100.15	24.86	-9.13	34.32	114.94	3.13	3.31

Company name	Management group	AIC sector	Traded currency	Total assets (m)	Last close price	NAV	Discount / premium (%)	Gearing (%)	SPTR 1yr (%)	SPTR 3yr (%)	SPTR 5yr (%)	SPTR 10yr (%)	NAVTR 1yr (%)	NAVTR 3yr (%)	NAVTR 5yr (%)	NAVTR 10yr (%)	5yr div grth (%pa)	Div yld (%)
Martin Currie Global Portfolio	Martin Currie Investment Management	Global	GBX	253.39	301.50	306.11	-1.51	13	5.87	-7.21	31.42	113.03	7.07	-3.22	32.85	118.82	0.00	1.39
Mid Wynd International	Lazard Asset Management	Global	GBX	385.12	671.00	686.49	-2.26	0	0.76	8.38	47.18	178.86	1.49	12.52	49.18	178.83	7.04	1.16
Monks Investment Trust	Baillie Gifford	Global	GBX	2,435.64	901.00	1,026.20	-12.20	5	-6.68	-20.84	18.47	141.88	-1.06	-6.73	38.17	139.88	17.61	0.35
Scottish Mortgage Investment Trust	Baillie Gifford	Global	GBX	12,129.10	642.20	774.68	-17.10	10	-11.42	-34.62	36.46	244.53	-7.25	-21.62	68.18	309.02	5.96	0.64
Witan Investment Trust	Witan Investment Services	Global	GBX	1,677.19	214.00	235.32	-9.06	11	0.52	21.32	18.63	107.79	2.53	25.39	27.45	107.74	6.67	2.71
<b>Global Emerging Markets</b>	<b>Weighted average</b>	<b>Global Emerging Markets</b>	<b>-</b>	<b>-</b>	<b>-</b>	<b>-</b>	<b>-11.57</b>	<b>3</b>	<b>9.05</b>	<b>-0.28</b>	<b>23.22</b>	<b>58.28</b>	<b>7.75</b>	<b>4.53</b>	<b>25.77</b>	<b>65.27</b>	<b>6.10</b>	<b>3.04</b>
Ashoka WhiteOak Emerging Markets	Acorn Asset Management	Global Emerging Markets	GBX	31.07	98.00	98.54	-0.55	0	-	-	-	-	-	-	-	-	-	-
Barings Emerging EMEA Opportunities	Baring Asset Management	Global Emerging Markets	GBX	69.38	438.00	604.93	-27.59	0	-11.11	-11.11	-23.15	-19.14	-2.27	3.48	-10.13	-4.32	-11.88	3.88
BlackRock Frontiers	BlackRock Investment Management (UK)	Global Emerging Markets	GBX	377.28	134.50	149.68	-10.14	16	10.79	57.78	22.73	73.35	9.17	66.47	39.29	103.44	2.16	4.19
Fidelity Emerging Markets	Fidelity	Global Emerging Markets	GBX	613.53	573.70	673.47	-14.81	0	5.67	-23.15	0.00	18.17	3.56	-19.03	1.96	26.55	0.99	2.79

Company name	Management group	AIC sector	Traded currency	Total assets (m)	Last close price	NAV	Discount / premium (%)	Gearing (%)	SPTR 1yr (%)	SPTR 3yr (%)	SPTR 5yr (%)	SPTR 10yr (%)	NAVTR 1yr (%)	NAVTR 3yr (%)	NAVTR 5yr (%)	NAVTR 10yr (%)	5yr div grth (%pa)	Div yld (%)
Gulf Investment Fund	Epicure Managers Qatar	Global Emerging Markets	USD	90.23	1.90	2.25	-15.56	0	-11.85	75.20	131.31	224.53	11.53	82.43	116.92	147.71	18.53	3.69
JPMorgan Emerging Europe, Middle East & Africa	J.P. Morgan Asset Management	Global Emerging Markets	GBX	23.57	119.90	46.65	157.02	19	51.77	-76.13	-71.19	-67.17	-0.11	-91.82	-91.11	-89.26	-6.51	0.01
JPMorgan Emerging Markets	J.P. Morgan Asset Management	Global Emerging Markets	GBX	1,290.69	97.00	109.93	-11.76	2	6.80	-13.13	32.69	87.18	4.30	-7.04	31.06	89.15	5.71	1.70
JPMorgan Global Emerging Markets Income	J.P. Morgan Asset Management	Global Emerging Markets	GBX	446.36	117.00	135.82	-13.86	10	12.40	12.16	23.89	42.15	12.87	18.05	33.00	65.73	1.17	4.53
Mobius Investment Trust	Mobius Capital Partners	Global Emerging Markets	GBX	153.17	120.00	132.71	-9.58	0	1.98	21.59	29.41	-	8.96	27.28	37.97	-	-	1.00
Templeton Emerging Markets	Franklin Templeton Investments	Global Emerging Markets	GBX	1,962.21	142.80	165.51	-13.72	0	11.96	-8.13	22.40	52.33	10.95	-6.34	22.94	54.67	10.76	3.50
Utilico Emerging Markets Trust	ICM	Global Emerging Markets	GBX	507.70	209.00	249.37	-16.19	4	7.16	39.15	28.54	58.07	5.33	40.60	28.16	71.46	3.84	4.04
<b>Global Equity Income</b>	<b>Weighted average</b>	<b>Global Equity Income</b>	<b>-</b>	<b>-</b>	<b>-</b>	<b>-</b>	<b>-5.29</b>	<b>3</b>	<b>4.28</b>	<b>40.70</b>	<b>55.62</b>	<b>150.59</b>	<b>6.18</b>	<b>47.36</b>	<b>61.96</b>	<b>156.68</b>	<b>4.80</b>	<b>4.11</b>
British & American	British & American	Global Equity Income	GBX	4.54	17.50	15.70	11.46	3	8.95	24.17	-62.53	-52.19	-28.62	-19.34	-7.28	-23.61	-27.27	10.00
Henderson International Income	Janus Henderson Investors	Global Equity Income	GBX	361.48	148.50	174.64	-14.97	0	-5.66	22.01	16.51	77.07	2.37	35.37	34.49	114.60	8.15	4.98
Invesco Select Trust - Global Equity Income shares	Invesco Asset Management	Global Equity Income	GBX	68.64	233.00	268.46	-13.21	1	15.54	43.33	42.63	126.72	18.68	63.46	58.12	154.59	1.45	3.09

Company name	Management group	AIC sector	Traded currency	Total assets (m)	Last close price	NAV	Discount / premium (%)	Gearing (%)	SPTR 1yr (%)	SPTR 3yr (%)	SPTR 5yr (%)	SPTR 10yr (%)	NAVTR 1yr (%)	NAVTR 3yr (%)	NAVTR 5yr (%)	NAVTR 10yr (%)	5yr div grth (%pa)	Div yld (%)
JPMorgan Global Growth & Income	J.P. Morgan Asset Management	Global Equity Income	GBX	2,006.46	465.00	460.19	1.05	0	14.31	53.63	84.20	240.21	10.37	56.37	84.72	213.69	6.93	3.97
Murray International Trust	abrdrn	Global Equity Income	GBX	1,668.46	226.00	249.92	-9.57	6	-3.19	43.02	32.67	58.41	3.15	48.61	40.30	89.70	2.29	4.96
Scottish American	Baillie Gifford	Global Equity Income	GBX	967.50	461.50	508.69	-9.28	6	-1.23	18.09	46.06	144.96	5.55	35.88	67.58	183.17	4.48	2.99
STS Global Income & Growth Trust	Troy Asset Management	Global Equity Income	GBX	213.54	207.50	212.69	-2.44	7	-4.42	21.53	49.50	91.83	-3.81	21.51	41.54	100.02	0.33	2.99
<b>Global Smaller Companies</b>	<b>Weighted average</b>	<b>Global Smaller Companies</b>	-	-	-	-	<b>-17.20</b>	<b>2</b>	<b>-6.75</b>	<b>-12.66</b>	<b>12.60</b>	<b>106.02</b>	<b>-3.69</b>	<b>-2.44</b>	<b>31.06</b>	<b>133.57</b>	<b>-</b>	<b>0.33</b>
Edinburgh Worldwide	Baillie Gifford	Global Smaller Companies	GBX	681.80	124.80	149.48	-16.51	16	-27.69	-56.59	-24.09	55.41	-24.39	-46.60	-9.48	74.26	-	0.00
Herald Investment Trust	Herald Investment Management	Global Smaller Companies	GBX	1,091.57	1,614.00	1,932.52	-16.48	0	-6.38	-6.60	35.63	145.48	-6.76	-1.89	38.07	153.11	-	0.00
North Atlantic Smaller Companies	Harwood Capital	Global Smaller Companies	GBX	696.41	3,490.00	5,173.34	-32.54	0	10.02	22.18	26.66	125.33	6.66	18.10	44.58	182.64	-	0.63
Smithson Investment Trust	Fundsmith	Global Smaller Companies	GBX	2,224.20	1,176.00	1,378.34	-14.68	0	-6.81	-20.97	11.07	-	-0.32	-5.25	37.64	-	-	0.00
The Global Smaller Companies Trust	Columbia Threadneedle	Global Smaller Companies	GBX	830.14	130.60	153.74	-15.05	2	-3.76	9.82	2.24	75.35	-2.90	18.93	20.63	106.77	9.82	1.76
<b>Europe</b>	<b>Weighted average</b>	<b>Europe</b>	-	-	-	-	<b>-10.03</b>	<b>8</b>	<b>12.19</b>	<b>25.21</b>	<b>41.01</b>	<b>119.19</b>	<b>10.62</b>	<b>27.26</b>	<b>42.98</b>	<b>127.47</b>	<b>3.84</b>	<b>2.12</b>
Baillie Gifford European Growth	Baillie Gifford	Europe	GBX	354.79	76.60	90.02	-14.91	9	-2.31	-33.74	0.58	26.99	-1.62	-23.73	5.81	32.66	-20.10	0.91

Company name	Management group	AIC sector	Traded currency	Total assets (m)	Last close price	NAV	Discount / premium (%)	Gearing (%)	SPTR 1yr (%)	SPTR 3yr (%)	SPTR 5yr (%)	SPTR 10yr (%)	NAVTR 1yr (%)	NAVTR 3yr (%)	NAVTR 5yr (%)	NAVTR 10yr (%)	5yr div grth (%pa)	Div yld (%)
BlackRock Greater Europe	BlackRock Investment Management (UK)	Europe	GBX	542.57	471.00	511.56	-7.93	4	7.39	11.46	53.02	127.54	10.45	16.86	58.19	141.59	3.90	1.40
European Opportunities Trust	Devon Equity Management	Europe	GBX	872.17	763.00	836.04	-8.74	5	13.28	15.78	-0.68	87.53	8.31	16.49	9.46	110.35	-11.65	0.46
Fidelity European Trust	Fidelity	Europe	GBX	1,670.18	315.00	345.81	-8.91	16	12.72	38.49	64.51	158.98	12.32	41.32	60.17	154.00	12.10	2.44
Henderson European Focus Trust	Janus Henderson Investors	Europe	GBX	400.20	154.00	173.85	-11.42	2	19.87	37.37	48.93	119.10	14.55	37.40	54.96	141.42	8.08	2.82
Henderson EuroTrust	Janus Henderson Investors	Europe	GBX	331.87	126.50	148.35	-14.73	3	16.26	12.97	38.21	104.35	13.95	17.91	45.58	131.38	4.50	3.00
JPMorgan European Growth & Income	J.P. Morgan Asset Management	Europe	GBX	470.68	89.20	100.07	-10.86	3	15.23	55.91	51.30	112.42	12.93	49.92	46.74	111.68	18.72	4.71
<b>European Smaller Companies</b>	<b>Weighted average</b>	<b>European Smaller Companies</b>	-	-	-	-	<b>-13.80</b>	<b>8</b>	<b>-1.41</b>	<b>3.78</b>	<b>22.56</b>	<b>115.42</b>	<b>0.66</b>	<b>7.58</b>	<b>23.49</b>	<b>121.18</b>	<b>6.41</b>	<b>3.49</b>
European Assets Trust	Columbia Threadneedle	European Smaller Companies	GBX	312.10	76.80	84.25	-8.84	0	-4.77	-4.69	4.43	53.17	0.44	-6.33	4.88	63.52	-6.61	7.55
European Smaller Companies	Janus Henderson Investors	European Smaller Companies	GBX	749.54	138.50	164.36	-15.73	15	6.28	21.85	43.90	163.86	6.15	27.40	46.28	166.74	14.63	3.39
JPMorgan European Discovery	J.P. Morgan Asset Management	European Smaller Companies	GBX	737.56	357.50	414.04	-13.66	6	-5.21	-0.93	6.54	90.76	-3.49	-1.63	4.05	92.11	6.08	2.52
Montanaro European Smaller Companies	Montanaro Investment Managers	European Smaller Companies	GBX	251.31	108.00	128.07	-15.67	3	-7.31	-20.85	33.13	135.77	-2.87	-4.14	36.97	147.43	2.68	0.90

Company name	Management group	AIC sector	Traded currency	Total assets (m)	Last close price	NAV	Discount / premium (%)	Gearing (%)	SPTR 1yr (%)	SPTR 3yr (%)	SPTR 5yr (%)	SPTR 10yr (%)	NAVTR 1yr (%)	NAVTR 3yr (%)	NAVTR 5yr (%)	NAVTR 10yr (%)	5yr div grth (%pa)	Div yld (%)
Asia Pacific	Weighted average	Asia Pacific	-	-	-	-	-12.03	4	1.84	-7.08	36.60	125.08	2.84	-0.16	45.30	130.26	10.84	1.82
abrdn New Dawn Investment Trust	abrdn	Asia Pacific	GBX	311.83	229.00	272.07	-15.83	7	-3.71	-13.67	22.93	53.56	-0.81	-8.83	23.71	62.05	0.00	1.88
Asia Dragon Trust	abrdn	Asia Pacific	GBX	490.01	328.00	399.05	-17.80	7	-4.42	-22.69	5.36	37.55	-0.89	-16.37	13.51	49.67	14.52	2.01
Pacific Assets Trust	Frostrow Capital	Asia Pacific	GBX	454.92	345.00	376.10	-8.27	0	2.71	25.01	38.97	136.68	0.31	23.45	48.09	149.85	-2.42	0.67
Pacific Horizon Investment Trust	Baillie Gifford	Asia Pacific	GBX	526.65	512.00	579.57	-11.66	0	-1.49	-17.36	77.52	216.28	0.46	2.92	103.05	216.90	-	0.63
Schroder Asian Total Return	Schroder Investment Management	Asia Pacific	GBX	459.12	390.00	415.58	-6.16	8	7.66	-6.07	31.87	147.04	7.56	1.69	44.42	154.25	18.04	2.82
Schroder AsiaPacific Fund	Schroder Investment Management	Asia Pacific	GBX	842.72	460.50	531.71	-13.39	3	5.48	-9.40	31.84	116.24	6.72	-4.27	32.01	119.54	16.47	2.61
Asia Pacific Equity Income	Weighted average	Asia Pacific Equity Income	-	-	-	-	-9.23	5	4.44	5.33	19.44	76.08	6.22	8.98	24.29	84.80	4.84	6.39
abrdn Asian Income Fund	abrdn	Asia Pacific Equity Income	GBX	405.65	185.00	217.07	-14.77	9	3.18	11.13	22.37	36.18	4.16	15.28	25.03	58.15	2.13	5.73
Henderson Far East Income	Janus Henderson Investors	Asia Pacific Equity Income	GBX	370.77	197.80	209.37	-5.53	8	-9.75	-10.70	-14.34	17.94	-2.64	-5.86	-4.84	28.74	2.30	12.23
Invesco Asia Trust	Invesco Asset Management	Asia Pacific Equity Income	GBX	233.63	296.00	344.84	-14.16	1	10.40	10.99	42.38	136.46	9.70	12.11	40.50	136.43	21.89	5.00
JPMorgan Asia Growth & Income	J.P. Morgan Asset Management	Asia Pacific Equity Income	GBX	327.85	330.00	364.06	-9.36	0	12.81	-15.00	31.74	118.45	12.00	-4.40	26.06	109.29	0.00	4.76

Company name	Management group	AIC sector	Traded currency	Total assets (m)	Last close price	NAV	Discount / premium (%)	Gearing (%)	SPTR 1yr (%)	SPTR 3yr (%)	SPTR 5yr (%)	SPTR 10yr (%)	NAVTR 1yr (%)	NAVTR 3yr (%)	NAVTR 5yr (%)	NAVTR 10yr (%)	5yr div grth (%pa)	Div yld (%)
Schroder Oriental Income	Schroder Investment Management	Asia Pacific Equity Income	GBX	679.45	236.00	252.76	-6.63	5	6.64	19.29	22.46	87.23	7.92	19.10	32.71	98.85	4.38	4.83
Asia Pacific Smaller Companies	Weighted average	Asia Pacific Smaller Companies	-	-	-	-	-14.43	6	11.85	39.86	43.49	91.98	13.26	41.19	47.60	110.38	15.29	2.33
abrdrn Asia Focus	abrdrn	Asia Pacific Smaller Companies	GBX	485.09	243.50	294.27	-17.25	4	10.26	31.37	44.00	50.78	11.80	34.57	43.57	82.36	19.78	2.63
Fidelity Asian Values	Fidelity	Asia Pacific Smaller Companies	GBX	434.34	481.00	532.39	-9.65	10	13.71	45.37	40.03	161.20	14.28	46.03	52.80	156.45	21.40	3.01
Scottish Oriental Smaller Companies	FSSA IM	Asia Pacific Smaller Companies	GBX	386.12	1,230.00	1,471.01	-16.38	3	11.71	44.29	46.85	64.24	14.04	44.51	47.22	97.04	2.48	1.14
Flexible Investment	Weighted average	Flexible Investment	-	-	-	-	-21.43	1	-8.65	11.38	12.29	68.54	0.92	27.30	39.53	107.51	4.66	2.18
abrdrn Diversified Income and Growth	abrdrn	Flexible Investment	GBX	351.73	77.80	111.43	-30.18	1	-7.80	-0.18	-14.75	-7.31	0.70	13.94	15.83	21.72	-1.00	7.30
Bailiwick Investments	Ravenscroft	Flexible Investment	GBX	87.72	-	153.89	-	0	-	-	-	-	9.34	33.70	34.52	120.11	1.76	-
Caledonia Investments	Caledonia Investments	Flexible Investment	GBX	2,847.20	3,135.00	5,162.20	-39.27	0	-5.53	28.03	32.53	116.75	4.23	58.95	63.77	171.96	3.41	2.15
Capital Gearing Trust	CG Asset Management	Flexible Investment	GBX	1,083.02	4,395.00	4,607.69	-4.62	0	-9.07	2.78	13.10	38.44	-2.68	9.26	21.36	59.87	23.36	1.37
Castelnau Group	Phoenix Asset Management	Flexible Investment	GBX	215.62	72.50	67.67	7.14	0	-5.84	-	-	-	-15.53	-	-	-	-	0.00



Company name	Management group	AIC sector	Traded currency	Total assets (m)	Last close price	NAV	Discount / premium (%)	Gearing (%)	SPTR 1yr (%)	SPTR 3yr (%)	SPTR 5yr (%)	SPTR 10yr (%)	NAVTR 1yr (%)	NAVTR 3yr (%)	NAVTR 5yr (%)	NAVTR 10yr (%)	5yr div grth (%pa)	Div yld (%)
CT Global Managed Portfolio Growth	Columbia Threadneedle	Flexible Investment	GBX	79.71	210.00	214.28	-2.00	0	-6.67	-7.49	5.00	59.70	-5.46	-6.42	7.97	59.90	-	0.00
CT Global Managed Portfolio Income	Columbia Threadneedle	Flexible Investment	GBX	59.59	101.50	103.16	-1.61	11	-6.53	4.19	1.91	36.90	-6.49	4.71	5.17	38.12	4.78	7.09
Global Opportunities Trust	Global Opportunities	Flexible Investment	GBX	107.42	295.00	367.59	-19.75	0	1.02	25.45	7.03	62.38	4.42	38.34	23.29	87.22	-1.16	1.69
Hansa Investment Company	Hansa Capital Partners	Flexible Investment	GBX	368.56	192.00	307.13	-37.49	0	9.74	23.66	0.43	37.16	2.69	20.55	19.97	54.86	-	1.67
Hansa Investment Company	Hansa Capital Partners	Flexible Investment	GBX	368.56	183.00	307.13	-40.42	0	2.48	13.26	1.25	29.58	2.43	20.25	19.29	53.99	-	1.75
Invesco Select Trust - Balanced Risk Allocation sh	Invesco Asset Management	Flexible Investment	GBX	6.15	117.50	145.73	-19.37	0	5.07	-12.70	-8.41	10.07	-0.74	5.61	12.73	31.38	-	3.40
JPMorgan Global Core Real Assets	J.P. Morgan Asset Management	Flexible Investment	GBX	208.06	63.90	97.52	-34.48	0	-28.95	-24.98	-	-	-4.07	22.82	-	-	-	6.57
JPMorgan Multi-Asset Growth & Income	J.P. Morgan Asset Management	Flexible Investment	GBX	66.66	89.50	91.26	-1.93	0	5.08	23.87	19.35	-	1.84	13.39	14.11	-	-	5.36
Majedie Investments	Marylebone Partners	Flexible Investment	GBX	148.27	211.50	239.41	-11.66	13	37.32	30.09	-4.30	76.26	9.43	14.01	-7.07	49.61	-2.48	4.92
MIGO Opportunities Trust	Premier Miton	Flexible Investment	GBX	73.95	310.50	319.13	-2.70	0	-3.72	27.03	15.78	107.45	-1.28	25.68	19.23	91.93	-	0.97

Company name	Management group	AIC sector	Traded currency	Total assets (m)	Last close price	NAV	Discount / premium (%)	Gearing (%)	SPTR 1yr (%)	SPTR 3yr (%)	SPTR 5yr (%)	SPTR 10yr (%)	NAVTR 1yr (%)	NAVTR 3yr (%)	NAVTR 5yr (%)	NAVTR 10yr (%)	5yr div grth (%pa)	Div yld (%)
New Star Investment Trust	Brompton Asset Management	Flexible Investment	GBX	125.43	109.50	171.90	-36.30	0	-6.97	1.00	5.96	71.42	1.99	9.67	17.21	68.92	21.06	2.37
Personal Assets Trust	Troy Asset Management	Flexible Investment	GBX	1,717.91	463.00	467.72	-1.01	0	-0.81	9.82	24.05	59.06	1.09	11.31	26.82	57.05	0.00	1.21
RIT Capital Partners	RIT Capital Partners	Flexible Investment	GBX	3,908.15	1,770.00	2,390.00	-25.94	0	-19.17	1.19	-4.43	67.15	0.33	24.17	40.34	110.20	2.86	2.15
Ruffer Investment Company	Ruffer	Flexible Investment	GBX	1,056.02	264.00	275.46	-4.16	0	-13.80	15.56	20.04	32.64	-7.70	16.88	29.25	43.54	10.76	1.14
Schroder BSC Social Impact	Schroder Investment Management	Flexible Investment	GBX	88.64	92.00	105.35	-12.67	0	-3.38	-	-	-	1.02	-	-	-	-	2.50
Tetragon Financial Group	Tetragon Financial Management	Flexible Investment	USD	2,444.66	9.68	29.35	-67.02	0	1.43	29.38	5.71	118.39	5.50	29.03	49.77	146.24	-8.87	4.55
UIL	ICM	Flexible Investment	GBX	283.66	120.00	191.37	-37.29	82	-22.42	-13.60	-18.04	34.59	-13.47	-27.43	-26.05	54.71	1.30	6.67
UIL	ICM	Flexible Investment	GBX	283.66	125.50	132.06	-4.97	12	6.81	17.29	16.74	-	4.74	14.92	26.11	-	-	0.00
UIL	ICM	Flexible Investment	GBX	283.66	109.50	130.87	-16.33	32	2.34	16.18	5.54	-	5.00	15.75	27.63	-	-	0.00
UIL	ICM	Flexible Investment	GBX	287.24	88.00	115.14	-23.57	58	2.33	-	-	-	5.75	-	-	-	-	0.00
<b>Growth Capital</b>	<b>Weighted average</b>	<b>Growth Capital</b>	-	-	-	-	<b>-55.45</b>	<b>0</b>	<b>-20.88</b>	<b>-59.31</b>	-	-	<b>-3.67</b>	<b>-16.39</b>	-	-	-	<b>5.02</b>
Chrysalis Investments	Jupiter Unit Trust Managers	Growth Capital	GBX	770.85	55.50	134.65	-58.78	0	-1.25	-60.92	-	-	-8.89	-16.35	-	-	-	0.00
Petershill Partners	Goldman Sachs Asset Management, L.P.	Growth Capital	GBX	3,837.91	147.60	338.53	-56.40	0	-19.07	-	-	-	2.46	-	-	-	-	7.92

Company name	Management group	AIC sector	Traded currency	Total assets (m)	Last close price	NAV	Discount / premium (%)	Gearing (%)	SPTR 1yr (%)	SPTR 3yr (%)	SPTR 5yr (%)	SPTR 10yr (%)	NAVTR 1yr (%)	NAVTR 3yr (%)	NAVTR 5yr (%)	NAVTR 10yr (%)	5yr div grth (%pa)	Div yld (%)
Schiehallion Fund	Baillie Gifford	Growth Capital	USD	1,067.60	0.45	1.03	-56.48	0	-53.34	-63.54	-	-	-17.40	-10.95	-	-	-	0.00
Schroder British Opportunities	Schroder Investment Management	Growth Capital	GBX	76.19	73.00	103.09	-29.19	1	5.80	-	-	-	4.25	-	-	-	-	0.00
Schroders Capital Global Innovation Trust	Schroder Investment Management	Growth Capital	GBX	219.13	15.50	24.99	-37.98	0	-0.39	-43.64	-82.39	-	-20.59	-43.00	-74.65	-	-	0.00
Seraphim Space Investment Trust	Seraphim Space	Growth Capital	GBX	220.36	32.15	92.90	-65.39	0	-34.72	-	-	-	-11.52	-	-	-	-	0.00
Hedge Funds	Weighted average	Hedge Funds	-	-	-	-	-11.74	0	-16.95	7.87	48.28	87.08	-3.71	18.51	51.50	84.12	-	0.18
Alternative Liquidity Fund	Rampart Capital	Hedge Funds	USD	12.58	0.04	0.09	-59.21	0	-4.27	1.94	-35.68	-	-14.43	-25.62	-57.74	-	-21.40	30.00
BH Macro	Brevan Howard Capital Management	Hedge Funds	GBX	1,612.40	363.50	405.00	-10.25	0	-22.49	0.28	54.35	77.32	-2.46	25.93	68.75	93.13	-	0.00
BH Macro	Brevan Howard Capital Management	Hedge Funds	USD	1,612.40	3.74	4.22	-11.37	0	-27.73	4.32	62.06	155.11	-1.61	26.05	72.46	108.50	-	0.00
Boussard & Gavaudan Holding	Boussard & Gavaudan Asset Management	Hedge Funds	EUR	286.75	24.50	26.58	-7.81	0	11.99	33.84	36.35	106.72	-5.44	10.08	18.03	67.72	-	0.00
Boussard & Gavaudan Holding	Boussard & Gavaudan Asset Management	Hedge Funds	GBX	286.75	2,055.00	2,366.16	-13.15	0	2.75	37.00	32.15	97.41	-4.02	10.84	17.95	65.44	-	0.00
Gabelli Merger Plus+ Trust	Gabelli Funds	Hedge Funds	USD	66.45	9.00	9.70	-7.22	0	-2.57	45.83	42.13	-	2.48	15.27	24.60	-	-	5.33

Company name	Management group	AIC sector	Traded currency	Total assets (m)	Last close price	NAV	Discount / premium (%)	Gearing (%)	SPTR 1yr (%)	SPTR 3yr (%)	SPTR 5yr (%)	SPTR 10yr (%)	NAVTR 1yr (%)	NAVTR 3yr (%)	NAVTR 5yr (%)	NAVTR 10yr (%)	5yr div grth (%pa)	Div yld (%)
Highbridge Tactical Credit	Highbridge Capital Management	Hedge Funds	GBX	0.15	425.00	263.68	61.18	0	82.40	100.95	94.95	148.54	-1.74	10.36	20.32	45.62	-	0.00
Third Point Investors	Third Point	Hedge Funds	USD	582.57	18.48	23.05	-19.85	0	-16.72	12.65	33.47	91.74	-6.91	3.69	26.51	64.71	-	0.00
<b>Japan</b>	<b>Weighted average</b>	<b>Japan</b>	<b>-</b>	<b>-</b>	<b>-</b>	<b>-</b>	<b>-9.35</b>	<b>17</b>	<b>0.48</b>	<b>-9.40</b>	<b>7.90</b>	<b>99.80</b>	<b>2.83</b>	<b>-8.80</b>	<b>14.35</b>	<b>108.84</b>	<b>5.36</b>	<b>1.43</b>
Baillie Gifford Japan Trust	Baillie Gifford	Japan	GBX	790.03	648.00	716.68	-9.58	19	-14.34	-27.71	-14.56	80.61	-7.32	-20.84	-0.73	109.28	-	0.93
CC Japan Income & Growth Trust	Chikara Investments	Japan	GBX	283.34	162.50	174.51	-6.88	21	20.87	49.64	23.88	-	17.65	39.33	35.81	-	7.27	3.02
Fidelity Japan Trust	Fidelity	Japan	GBX	282.95	156.00	177.11	-11.92	23	-3.41	-23.15	9.47	118.18	-0.63	-18.53	15.86	119.66	-	0.00
JPMorgan Japanese	J.P. Morgan Asset Management	Japan	GBX	845.38	445.00	489.91	-9.17	14	1.70	-27.89	16.55	102.74	3.96	-25.64	16.80	102.07	4.40	1.39
Schroder Japan Trust	Schroder Investment Management	Japan	GBX	330.55	226.00	249.47	-9.41	9	16.49	39.00	21.90	121.25	13.44	28.76	23.55	116.30	6.19	2.39
<b>Japanese Smaller Companies</b>	<b>Weighted average</b>	<b>Japanese Smaller Companies</b>	<b>-</b>	<b>-</b>	<b>-</b>	<b>-</b>	<b>-10.40</b>	<b>8</b>	<b>-2.51</b>	<b>-10.08</b>	<b>-16.16</b>	<b>-</b>	<b>-0.66</b>	<b>-5.78</b>	<b>-7.57</b>	<b>-</b>	<b>-</b>	<b>1.71</b>
AVI Japan Opportunity Trust	Asset Value Investors	Japanese Smaller Companies	GBX	172.20	104.75	110.98	-5.61	5	-0.45	2.53	8.75	-	2.65	8.43	19.37	-	-	1.48
Baillie Gifford Shin Nippon	Baillie Gifford	Japanese Smaller Companies	GBX	496.24	116.60	134.53	-13.33	17	-21.53	-52.41	-32.17	79.52	-17.91	-41.88	-19.14	121.63	-	0.00
JPMorgan Japan Small Cap Growth & Income	J.P. Morgan Asset Management	Japanese Smaller Companies	GBX	198.43	297.00	332.13	-10.58	6	-2.41	-34.72	-2.81	91.40	0.33	-30.88	-3.98	81.98	-	4.78

Company name	Management group	AIC sector	Traded currency	Total assets (m)	Last close price	NAV	Discount / premium (%)	Gearing (%)	SPTR 1yr (%)	SPTR 3yr (%)	SPTR 5yr (%)	SPTR 10yr (%)	NAVTR 1yr (%)	NAVTR 3yr (%)	NAVTR 5yr (%)	NAVTR 10yr (%)	5yr div grth (%pa)	Div yld (%)
Nippon Active Value Fund	Rising Sun Management	Japanese Smaller Companies	GBX	288.65	139.00	152.61	-8.92	0	22.60	56.57	-	-	22.01	54.75	-	-	-	2.30
Latin America	Weighted average	Latin America	-	-	-	-	-	-	-	-	-	-	-	-	-	-	-	-
BlackRock Latin American	BlackRock Investment Management (UK)	Latin America	GBX	132.63	358.50	422.02	-15.05	6	-2.29	43.63	11.07	24.79	-1.63	53.98	6.40	23.57	16.80	5.99
North America	Weighted average	North America	-	-	-	-	-28.40	2	1.74	41.68	137.76	209.95	8.78	43.70	176.12	214.06	5.81	1.61
Baillie Gifford US Growth	Baillie Gifford	North America	GBX	583.71	137.40	177.83	-22.74	6	-16.73	-47.36	17.24	-	-9.02	-26.47	56.43	-	-	0.00
BlackRock Sustainable American Income	BlackRock Investment Management (UK)	North America	GBX	154.93	174.00	193.51	-10.08	0	-8.10	35.53	27.92	129.85	-5.57	37.92	36.42	152.64	10.08	4.60
Canadian General Investments	Morgan Meighen & Associates	North America	CAD	1,206.41	32.58	50.64	-35.66	13	-0.57	30.27	64.78	166.35	6.31	29.39	73.57	164.30	5.02	2.95
JPMorgan American	J.P. Morgan Asset Management	North America	GBX	1,514.95	755.00	786.73	-4.03	2	3.73	54.53	78.54	267.26	4.37	51.71	78.40	288.37	5.68	0.96
Middlefield Canadian Income Trust	Middlefield International	North America	GBX	147.57	95.00	111.70	-14.95	23	-11.93	35.61	30.76	55.63	-14.55	36.96	31.73	64.48	0.20	5.47
North American Income Trust	abrdn	North America	GBX	457.85	258.50	304.24	-15.03	8	-14.22	41.65	20.37	113.16	-6.08	39.79	27.01	150.13	7.12	4.37
Pershing Square Holdings	Pershing Square Capital Management	North America	USD	10,358.00	35.40	55.36	-36.05	0	4.38	46.38	179.90	-	11.66	48.04	216.25	-	-	1.48

Company name	Management group	AIC sector	Traded currency	Total assets (m)	Last close price	NAV	Discount / premium (%)	Gearing (%)	SPTR 1yr (%)	SPTR 3yr (%)	SPTR 5yr (%)	SPTR 10yr (%)	NAVTR 1yr (%)	NAVTR 3yr (%)	NAVTR 5yr (%)	NAVTR 10yr (%)	5yr div grth (%pa)	Div yld (%)
North American Smaller Companies	Weighted average	North American Smaller Companies	-	-	-	-	-	-	-	-	-	-	-	-	-	-	-	-
Brown Advisory US Smaller Companies	Brown Advisory	North American Smaller Companies	GBX	155.73	1,092.50	1,302.91	-16.15	0	-13.47	11.48	10.02	65.28	-9.98	15.41	18.36	99.23	-	0.00
JPMorgan US Smaller Companies	J.P. Morgan Asset Management	North American Smaller Companies	GBX	270.33	320.50	378.95	-15.42	5	-17.28	5.65	8.13	124.92	-14.16	16.35	28.30	159.75	0.00	0.78
Private Equity	Weighted average	Private Equity	-	-	-	-	-	-	-	-	-	-	-	-	-	-	-	-
3i Group	3i Group	Private Equity	GBX	18,586.60	1,934.50	1,830.00	5.71	4	72.29	123.48	163.85	657.51	27.76	126.20	187.40	790.35	12.05	2.74
abrdn Private Equity Opportunities	abrdn	Private Equity	GBX	1,185.09	432.00	770.81	-43.95	0	7.60	50.18	52.48	204.77	8.45	79.19	112.53	308.70	3.71	3.70
Apax Global Alpha	Apax Guernsey Managers	Private Equity	GBX	1,107.01	153.00	225.41	-32.12	0	-1.59	15.71	60.87	-	-5.97	25.81	70.31	-	7.04	7.73
CT Private Equity Trust	Columbia Threadneedle	Private Equity	GBX	528.10	432.00	675.66	-36.06	4	9.61	71.95	68.99	232.48	-0.66	95.57	122.98	282.36	12.91	5.97
Dunedin Enterprise	Dunedin	Private Equity	GBX	34.65	488.00	629.50	-22.48	0	3.27	81.13	76.22	199.46	20.12	87.96	97.69	162.81	25.44	12.09
HarbourVest Global Private Equity	HarbourVest Advisers L.P.	Private Equity	GBX	3,160.20	2,155.00	4,042.00	-46.68	0	0.00	25.29	57.07	243.65	-1.87	82.98	129.01	394.58	-	0.00
HgCapital Trust	Hg	Private Equity	GBX	2,167.38	367.50	473.51	-22.39	0	7.57	30.27	106.16	336.04	7.01	65.45	151.66	443.95	8.76	1.90
ICG Enterprise Trust	Intermediate Capital Group	Private Equity	GBX	1,283.00	1,090.00	1,903.12	-42.73	0	11.63	43.78	49.81	154.64	0.88	61.10	99.38	243.08	7.39	2.94
JPEL Private Equity	Fortress Investment Group	Private Equity	USD	40.85	1.01	1.61	-37.27	0	-23.34	3.48	-28.86	90.36	-6.94	0.00	-9.55	42.48	-	0.00

Company name	Management group	AIC sector	Traded currency	Total assets (m)	Last close price	NAV	Discount / premium (%)	Gearing (%)	SPTR 1yr (%)	SPTR 3yr (%)	SPTR 5yr (%)	SPTR 10yr (%)	NAVTR 1yr (%)	NAVTR 3yr (%)	NAVTR 5yr (%)	NAVTR 10yr (%)	5yr div grth (%pa)	Div yld (%)
JZ Capital Partners	Jordan / Zalaznick Advisors	Private Equity	GBX	254.20	162.50	328.10	-50.47	0	-6.61	90.06	-64.36	-57.33	-16.98	-5.52	-57.26	-41.24	-	0.00
Literacy Capital	BOOK Asset Management	Private Equity	GBX	295.68	466.00	492.80	-5.44	0	22.96	-	-	-	28.03	-	-	-	-	0.00
LMS Capital	LMS Capital	Private Equity	GBX	42.77	22.15	52.98	-58.19	0	-25.66	-14.21	-46.36	-62.38	-11.09	-4.59	-24.35	-32.09	-	4.18
NB Private Equity Partners	NB Alternatives Advisors	Private Equity	GBX	1,099.97	1,572.00	2,230.66	-29.53	1	3.35	76.39	79.33	326.02	-5.05	65.66	84.73	301.80	14.00	4.82
NB Private Equity Partners	NB Alternatives Advisors	Private Equity	GBX	1,099.97	122.00	125.31	-2.64	0	4.27	12.44	18.45	-	4.25	13.29	23.12	-	-	0.00
Oakley Capital Investments	Oakley Capital Investments	Private Equity	GBX	1,194.61	420.00	677.15	-37.97	0	8.77	70.91	149.22	175.60	4.03	96.30	178.18	284.62	0.00	1.07
Pantheon International	Pantheon Ventures	Private Equity	GBX	2,250.62	283.50	470.80	-39.78	0	13.86	30.34	35.65	171.81	-1.71	56.37	80.85	261.68	-	0.00
Princess Private Equity Holding	Partners Group	Private Equity	EUR	1,088.07	9.70	15.12	-35.85	3	7.10	10.30	22.71	167.38	10.10	32.36	63.14	198.34	5.45	7.53
Symphony International Holdings	Symphony Asia Holdings	Private Equity	USD	396.94	0.49	0.77	-36.89	0	15.09	118.78	-6.12	65.81	-8.02	26.05	-16.35	-8.27	0.00	5.12
<b>UK All Companies</b>	<b>Weighted average</b>	<b>UK All Companies</b>	<b>-</b>	<b>-</b>	<b>-</b>	<b>-</b>	<b>-12.73</b>	<b>9</b>	<b>2.31</b>	<b>16.60</b>	<b>9.77</b>	<b>58.57</b>	<b>4.56</b>	<b>23.72</b>	<b>14.78</b>	<b>62.69</b>	<b>6.16</b>	<b>3.42</b>
Artemis Alpha Trust	Artemis Investment Management	UK All Companies	GBX	107.02	263.50	319.39	-17.50	0	-5.77	3.38	-2.50	4.21	3.24	-5.25	-2.70	9.79	5.03	2.35
Aurora Investment Trust	Phoenix Asset Management	UK All Companies	GBX	170.90	202.50	224.64	-9.86	0	6.96	26.80	6.33	52.86	14.87	33.81	18.54	38.93	1.55	1.47
Baillie Gifford UK Growth	Baillie Gifford	UK All Companies	GBX	270.07	143.70	169.10	-15.02	5	-2.04	-16.54	-2.81	-2.63	0.00	-6.77	0.83	8.46	-9.71	2.51

Company name	Management group	AIC sector	Traded currency	Total assets (m)	Last close price	NAV	Discount / premium (%)	Gearing (%)	SPTR 1yr (%)	SPTR 3yr (%)	SPTR 5yr (%)	SPTR 10yr (%)	NAVTR 1yr (%)	NAVTR 3yr (%)	NAVTR 5yr (%)	NAVTR 10yr (%)	5yr div grth (%pa)	Div yld (%)
Fidelity Special Values	Fidelity	UK All Companies	GBX	1,045.51	256.00	281.71	-9.13	5	0.50	58.24	13.33	79.76	3.20	58.81	26.35	86.33	11.00	3.03
Henderson Opportunities Trust	Janus Henderson Investors	UK All Companies	GBX	93.88	865.00	1,035.12	-16.43	12	-12.23	5.44	-0.23	34.43	-9.28	5.73	-1.67	42.01	11.20	3.93
JPMorgan MidCap	J.P. Morgan Asset Management	UK All Companies	GBX	230.60	790.00	924.11	-14.51	12	0.55	-5.05	-8.89	48.00	3.55	-2.98	-4.95	50.24	3.68	4.02
Mercantile Investment Trust	J.P. Morgan Asset Management	UK All Companies	GBX	1,991.86	183.00	213.00	-14.08	12	5.02	1.03	12.42	64.27	6.02	15.70	15.01	67.79	6.17	3.91
Schroder UK Mid Cap Fund	Schroder Investment Management	UK All Companies	GBX	218.12	496.00	569.56	-12.92	12	1.13	11.32	17.79	37.68	2.80	9.72	10.02	49.28	7.72	3.83
<b>UK Equity &amp; Bond Income</b>	<b>Weighted average</b>	<b>UK Equity &amp; Bond Income</b>	-	-	-	-	-	-	-	-	-	-	-	-	-	-	-	-
Henderson High Income Trust	Janus Henderson Investors	UK Equity & Bond Income	GBX	252.39	141.00	156.61	-9.97	23	-3.37	37.11	10.70	40.69	6.16	37.91	21.90	63.57	1.55	7.30
<b>UK Equity Income</b>	<b>Weighted average</b>	<b>UK Equity Income</b>	-	-	-	-	<b>-5.28</b>	<b>6</b>	<b>3.20</b>	<b>40.01</b>	<b>22.78</b>	<b>64.58</b>	<b>5.99</b>	<b>42.93</b>	<b>23.88</b>	<b>72.99</b>	<b>3.45</b>	<b>4.57</b>
abrdn Equity Income Trust	abrdn	UK Equity Income	GBX	160.23	300.00	291.97	2.75	11	4.20	50.96	-9.09	20.68	-7.29	25.29	-12.43	15.42	5.83	7.60
BlackRock Income & Growth	BlackRock Investment Management (UK)	UK Equity Income	GBX	44.17	178.00	194.90	-8.67	8	8.15	22.92	17.48	54.46	5.24	34.09	19.94	65.30	2.04	4.10
Chelverton UK Dividend Trust	Chelverton Asset Management	UK Equity Income	GBX	45.84	131.00	129.30	1.31	63	-13.20	41.75	-11.42	42.56	-8.91	28.79	-22.48	22.41	6.83	9.62
Chelverton UK Dividend Trust	Chelverton Asset Management	UK Equity Income	GBX	45.84	117.00	125.65	-6.88	0	0.43	8.33	8.33	-	3.95	12.35	21.44	-	-	0.00



Company name	Management group	AIC sector	Traded currency	Total assets (m)	Last close price	NAV	Discount / premium (%)	Gearing (%)	SPTR 1yr (%)	SPTR 3yr (%)	SPTR 5yr (%)	SPTR 10yr (%)	NAVTR 1yr (%)	NAVTR 3yr (%)	NAVTR 5yr (%)	NAVTR 10yr (%)	5yr div grth (%pa)	Div yld (%)
City of London Investment Trust	Janus Henderson Investors	UK Equity Income	GBX	1,984.87	375.00	378.21	-0.85	4	1.29	41.16	20.28	58.23	5.35	47.90	23.77	64.28	2.58	5.39
CT UK Capital & Income	Columbia Threadneedle	UK Equity Income	GBX	321.22	272.00	283.91	-4.19	7	3.07	28.71	3.73	50.41	3.45	32.67	13.76	56.22	2.07	4.32
CT UK High Income Trust	Columbia Threadneedle	UK Equity Income	GBX	107.38	77.00	81.01	-4.95	15	2.75	22.45	13.36	33.04	2.88	20.81	7.92	30.96	2.46	7.16
CT UK High Income Trust	Columbia Threadneedle	UK Equity Income	GBX	107.38	303.00	324.04	-6.49	15	6.35	23.69	12.45	44.19	2.88	20.83	7.95	31.00	2.46	7.21
CT UK High Income Trust	Columbia Threadneedle	UK Equity Income	GBX	107.38	74.00	81.01	-8.65	15	6.31	19.09	8.43	34.39	2.88	20.84	7.95	30.99	2.46	7.45
Diverse Income Trust	Premier Miton	UK Equity Income	GBX	263.59	75.40	82.75	-8.88	0	-8.83	-0.85	-4.91	38.27	-5.76	5.61	4.77	54.51	3.56	5.37
Dunedin Income Growth	abrdn	UK Equity Income	GBX	462.04	255.00	288.98	-11.76	7	-0.90	19.26	30.17	42.29	9.31	26.71	33.99	59.46	1.60	5.14
Edinburgh Investment Trust	Liontrust Asset Management	UK Equity Income	GBX	1,183.97	637.00	704.56	-9.59	4	12.21	65.64	23.88	67.80	13.91	61.01	21.98	73.93	-0.30	4.11
Finsbury Growth & Income Trust	Frostrow Capital	UK Equity Income	GBX	1,753.25	804.00	849.02	-5.30	1	1.97	9.62	16.69	101.08	3.15	16.63	23.55	113.99	4.43	2.36
Invesco Select Trust - UK Equity shares	Invesco Asset Management	UK Equity Income	GBX	127.79	147.75	173.97	-15.07	10	6.34	20.59	8.99	52.76	5.78	39.01	26.43	74.61	1.79	4.77
JPMorgan Claverhouse	J.P. Morgan Asset Management	UK Equity Income	GBX	432.75	634.00	671.82	-5.63	5	1.12	38.28	14.97	61.89	6.96	42.47	20.15	63.34	4.88	5.44
Law Debenture Corporation	Law Debenture Corporation	UK Equity Income	GBX	1,113.05	739.00	753.03	-1.86	7	3.31	64.88	59.85	102.36	8.60	63.92	46.29	110.48	12.01	4.13
Lowland Investment Company	Janus Henderson Investors	UK Equity Income	GBX	374.72	104.50	123.53	-15.41	12	2.42	36.30	-4.19	10.12	8.53	47.79	5.39	34.16	4.48	5.84

Company name	Management group	AIC sector	Traded currency	Total assets (m)	Last close price	NAV	Discount / premium (%)	Gearing (%)	SPTR 1yr (%)	SPTR 3yr (%)	SPTR 5yr (%)	SPTR 10yr (%)	NAVTR 1yr (%)	NAVTR 3yr (%)	NAVTR 5yr (%)	NAVTR 10yr (%)	5yr div grth (%pa)	Div yld (%)
Merchants Trust	Allianz Global Investors	UK Equity Income	GBX	817.82	484.00	491.03	-1.43	11	-3.33	68.16	34.30	61.89	-0.27	71.46	34.61	66.46	2.16	5.70
Murray Income Trust	abrdrn	UK Equity Income	GBX	1,035.99	778.00	857.67	-9.29	8	6.20	24.09	32.57	51.31	6.76	27.83	30.64	63.57	2.43	4.82
Schroder Income Growth Fund	Schroder Investment Management	UK Equity Income	GBX	223.16	259.50	278.80	-6.92	15	0.64	30.07	18.11	50.54	5.92	39.71	19.83	60.14	3.18	5.32
Shires Income	abrdrn	UK Equity Income	GBX	89.16	220.00	232.50	-5.38	23	-2.00	29.91	17.03	56.32	2.24	23.74	19.86	57.49	1.78	6.45
Temple Bar Investment Trust	RWC Asset Management (Redwheel)	UK Equity Income	GBX	754.94	223.50	238.26	-6.19	8	10.47	78.82	14.33	34.46	11.36	74.61	11.68	42.59	1.94	4.18
Troy Income & Growth Trust	Troy Asset Management	UK Equity Income	GBX	161.61	65.80	67.68	-2.78	1	-1.06	5.10	2.12	44.30	0.33	8.25	4.62	50.85	-5.12	3.22
<b>UK Smaller Companies</b>	<b>Weighted average</b>	<b>UK Smaller Companies</b>	-	-	-	-	<b>-13.94</b>	<b>7</b>	<b>-2.07</b>	<b>11.56</b>	<b>8.11</b>	<b>73.56</b>	<b>-0.12</b>	<b>14.39</b>	<b>11.73</b>	<b>79.66</b>	<b>5.88</b>	<b>3.68</b>
Aberforth Smaller Companies	Aberforth Partners	UK Smaller Companies	GBX	1,199.09	1,144.00	1,355.32	-15.59	4	1.68	44.17	8.58	49.96	3.82	48.12	12.85	55.83	6.25	4.13
Aberforth Split Level Income	Aberforth Partners	UK Smaller Companies	GBX	190.76	63.60	69.20	-8.09	40	14.25	77.20	-1.66	-	5.67	61.21	4.47	-	4.56	7.86
Aberforth Split Level Income	Aberforth Partners	UK Smaller Companies	GBX	190.76	119.50	124.28	-3.85	0	3.46	11.68	13.27	-	3.59	11.18	19.33	-	-	0.00
abrdrn Smaller Companies Income	abrdrn	UK Smaller Companies	GBX	55.15	235.00	248.84	-5.56	0	9.77	-1.95	9.26	47.17	-3.11	-10.67	-3.89	43.26	25.13	9.60
abrdrn UK Smaller Companies Growth	abrdrn	UK Smaller Companies	GBX	400.12	376.50	447.21	-15.81	2	-9.40	-29.42	-11.26	43.26	-5.93	-20.75	-0.35	68.16	9.46	2.92
Athelney Trust	Athelney Trust	UK Smaller Companies	GBX	4.21	195.00	194.95	0.03	0	5.02	21.10	14.27	86.64	-4.98	-6.97	-3.98	36.34	1.53	4.92

Company name	Management group	AIC sector	Traded currency	Total assets (m)	Last close price	NAV	Discount / premium (%)	Gearing (%)	SPTR 1yr (%)	SPTR 3yr (%)	SPTR 5yr (%)	SPTR 10yr (%)	NAVTR 1yr (%)	NAVTR 3yr (%)	NAVTR 5yr (%)	NAVTR 10yr (%)	5yr div grth (%pa)	Div yld (%)
BlackRock Smaller Companies	BlackRock Investment Management (UK)	UK Smaller Companies	GBX	705.05	1,166.00	1,372.58	-15.05	6	-5.85	-4.54	0.08	74.57	-4.81	4.67	8.58	90.95	9.00	3.43
BlackRock Throgmorton Trust	BlackRock Investment Management (UK)	UK Smaller Companies	GBX	637.79	520.00	564.39	-7.87	16	-4.31	-12.76	18.61	114.24	1.21	-4.44	15.38	105.48	4.28	2.13
Chelverton Growth Trust	Chelverton Asset Management	UK Smaller Companies	GBX	2.99	29.50	54.73	-46.10	0	5.36	5.36	-47.79	-28.92	8.08	53.39	5.78	17.77	-	0.00
Crystal Amber Fund	Crystal Amber Asset Management	UK Smaller Companies	GBX	84.45	62.50	101.46	-38.40	0	-2.55	58.88	-40.71	-5.33	-2.86	44.08	-28.99	17.54	31.95	32.00
Downing Strategic Micro-Cap	Downing	UK Smaller Companies	GBX	34.56	57.75	72.52	-20.37	0	10.63	3.77	-25.49	-	6.69	10.17	-5.91	-	-	0.52
Henderson Smaller Companies	Janus Henderson Investors	UK Smaller Companies	GBX	646.96	649.00	758.70	-14.46	15	-10.54	-12.02	-9.35	53.01	-6.68	-8.46	-5.16	57.27	4.36	4.01
Invesco Perpetual UK Smaller Companies	Invesco Asset Management	UK Smaller Companies	GBX	145.69	389.00	418.82	-7.12	2	0.55	10.42	3.07	84.96	-7.75	-1.58	1.40	72.57	-2.81	4.64
Investment Company	Chelverton Asset Management	UK Smaller Companies	GBX	15.50	318.00	324.75	-2.08	0	13.57	13.16	7.42	24.06	-2.09	6.28	4.62	26.71	-37.34	0.59
JPMorgan UK Smaller Companies	J.P. Morgan Asset Management	UK Smaller Companies	GBX	254.98	236.00	280.57	-15.89	15	-3.68	-6.41	30.56	88.97	-0.93	2.39	31.35	85.53	7.35	3.26
Marwyn Value Investors	Marwyn Investment Management	UK Smaller Companies	GBX	93.16	79.00	167.65	-52.88	0	-14.07	-14.07	-17.63	-38.77	5.66	23.22	-0.78	-14.70	7.91	11.47
Miton UK Microcap Trust	Premier Miton	UK Smaller Companies	GBX	51.20	47.50	54.10	-12.20	0	-19.27	-16.24	-15.73	-	-15.97	-12.78	-9.52	-	-16.06	0.32

Company name	Management group	AIC sector	Traded currency	Total assets (m)	Last close price	NAV	Discount / premium (%)	Gearing (%)	SPTR 1yr (%)	SPTR 3yr (%)	SPTR 5yr (%)	SPTR 10yr (%)	NAVTR 1yr (%)	NAVTR 3yr (%)	NAVTR 5yr (%)	NAVTR 10yr (%)	5yr div grth (%pa)	Div yld (%)
Montanaro UK Smaller Companies	Montanaro Investment Managers	UK Smaller Companies	GBX	189.62	84.60	101.34	-16.52	8	-14.15	-20.47	-6.52	21.97	-1.97	-12.25	-4.13	22.79	15.49	5.34
Odyssean Investment Trust	Odyssean Capital	UK Smaller Companies	GBX	170.30	147.50	145.30	1.51	0	-3.59	52.85	47.13	-	-4.24	34.33	53.74	-	-	0.00
Onward Opportunities	Dowgate Wealth	UK Smaller Companies	GBX	12.80	101.00	100.39	0.61	0	-	-	-	-	-	-	-	-	-	-
Oryx International Growth	Harwood Capital	UK Smaller Companies	GBX	224.56	1,065.00	1,604.00	-33.60	0	12.70	-2.29	35.24	213.24	16.65	25.61	76.26	265.38	-	0.00
Rights & Issues Investment Trust	Jupiter Unit Trust Managers	UK Smaller Companies	GBX	115.28	1,815.00	2,038.35	-10.96	0	-0.79	5.94	-6.99	143.05	-8.45	12.73	-3.67	110.03	5.40	2.20
River & Mercantile UK Micro Cap	River & Mercantile Asset Management	UK Smaller Companies	GBX	55.39	136.50	163.39	-16.46	0	-0.36	-15.48	-26.12	-	-6.75	-19.17	-18.54	-	-	0.00
Rockwood Strategic	Harwood Capital	UK Smaller Companies	GBX	47.06	171.50	175.09	-2.05	0	22.06	109.31	133.52	101.09	20.29	8.86	7.49	-	-	1.60
Strategic Equity Capital	Gresham House	UK Smaller Companies	GBX	156.10	299.50	317.93	-5.80	0	14.58	61.64	48.34	125.16	14.03	37.96	34.06	117.31	20.11	0.83
SVM UK Emerging Fund	SVM Asset Management	UK Smaller Companies	GBX	4.87	64.50	81.26	-20.63	0	-3.01	-10.42	-42.15	17.81	-5.74	-22.36	-26.38	22.77	-	0.00
Worsley Investors	Worsley Associates	UK Smaller Companies	GBX	15.04	26.80	44.56	-39.86	0	9.39	2.29	-27.37	-38.39	10.74	19.27	-1.83	-18.34	-	0.00
<b>Biotechnology &amp; Healthcare</b>	<b>Weighted average</b>	<b>Biotechnology &amp; Healthcare</b>	-	-	-	-	<b>-15.05</b>	<b>4</b>	<b>-16.56</b>	<b>-20.25</b>	<b>3.60</b>	<b>115.13</b>	<b>-10.38</b>	<b>-4.84</b>	<b>19.17</b>	<b>141.21</b>	<b>9.23</b>	<b>1.55</b>
Bellevue Healthcare Trust	Bellevue Asset Management	Biotechnology & Healthcare	GBX	750.40	120.80	132.55	-8.86	0	-24.96	-17.65	10.96	-	-21.24	-10.18	21.72	-	13.08	4.96
Biotech Growth Trust	Frostrow Capital	Biotechnology & Healthcare	GBX	292.43	718.00	793.75	-9.54	3	-25.83	-47.28	4.36	66.20	-24.44	-42.08	7.18	80.60	-	0.00

Company name	Management group	AIC sector	Traded currency	Total assets (m)	Last close price	NAV	Discount / premium (%)	Gearing (%)	SPTR 1yr (%)	SPTR 3yr (%)	SPTR 5yr (%)	SPTR 10yr (%)	NAVTR 1yr (%)	NAVTR 3yr (%)	NAVTR 5yr (%)	NAVTR 10yr (%)	5yr div grth (%pa)	Div yld (%)
International Biotechnology	SV Health Managers	Biotechnology & Healthcare	GBX	274.98	560.00	609.88	-8.18	16	-10.19	-19.32	16.09	146.24	-8.44	-11.76	23.85	151.95	6.42	5.61
Polar Capital Global Healthcare	Polar Capital Holdings	Biotechnology & Healthcare	GBX	436.18	300.00	327.78	-8.48	9	-5.65	35.53	47.06	134.38	-4.38	28.36	48.12	153.90	-9.19	0.70
Polar Capital Global Healthcare	Polar Capital Holdings	Biotechnology & Healthcare	GBX	436.18	116.50	120.70	-3.48	0	2.64	8.37	11.48	-	3.00	9.27	15.94	-	-	0.00
RTW Biotech Opportunities	RTW Investments	Biotechnology & Healthcare	USD	335.71	1.15	1.59	-27.99	0	0.88	-30.40	-	-	9.66	8.90	-	-	-	0.00
Syncona	Syncona Investment Managers	Biotechnology & Healthcare	GBX	1,235.47	128.20	184.60	-30.55	0	-26.74	-48.31	-50.39	17.29	-9.06	-9.24	-10.35	79.06	-	0.00
Worldwide Healthcare Trust	Frostrow Capital	Biotechnology & Healthcare	GBX	2,057.23	288.00	323.97	-11.10	7	-11.89	-13.75	17.32	164.85	-10.09	-2.92	32.76	187.35	12.12	1.08
<b>Commodities &amp; Natural Resources</b>	<b>Weighted average</b>	<b>Commodities &amp; Natural Resources</b>	<b>-</b>	<b>-</b>	<b>-</b>	<b>-</b>	<b>-14.70</b>	<b>9</b>	<b>-7.06</b>	<b>81.26</b>	<b>81.24</b>	<b>72.80</b>	<b>-2.20</b>	<b>98.15</b>	<b>60.67</b>	<b>63.88</b>	<b>16.84</b>	<b>5.15</b>
Baker Steel Resources Trust	Baker Steel Capital Managers	Commodities & Natural Resources	GBX	70.58	34.00	65.90	-48.41	0	-30.61	-45.38	-20.00	-17.07	-15.33	-12.99	15.10	-7.79	-	0.00
BlackRock Energy and Resources Income	BlackRock Investment Management (UK)	Commodities & Natural Resources	GBX	168.95	108.60	121.04	-10.28	7	-11.36	100.55	88.48	70.90	-6.34	96.95	90.41	87.52	1.92	4.05
BlackRock World Mining	BlackRock Investment Management (UK)	Commodities & Natural Resources	GBX	1,231.85	540.00	561.40	-3.81	13	-5.81	59.14	111.53	103.52	-1.72	47.25	82.60	79.02	20.72	7.41
CQS Natural Resources Growth & Income	New City Investment Managers	Commodities & Natural Resources	GBX	148.14	166.50	200.54	-16.97	11	-14.83	108.71	112.80	82.05	-9.40	104.59	111.65	87.07	0.00	3.36

Company name	Management group	AIC sector	Traded currency	Total assets (m)	Last close price	NAV	Discount / premium (%)	Gearing (%)	SPTR 1yr (%)	SPTR 3yr (%)	SPTR 5yr (%)	SPTR 10yr (%)	NAVTR 1yr (%)	NAVTR 3yr (%)	NAVTR 5yr (%)	NAVTR 10yr (%)	5yr div grth (%pa)	Div yld (%)
Geiger Counter	New City Investment Managers	Commodities & Natural Resources	GBX	96.13	48.25	64.84	-25.59	13	-7.21	194.21	135.37	96.94	24.48	317.51	218.16	111.55	-	0.00
Golden Prospect Precious Metals	New City Investment Managers	Commodities & Natural Resources	GBX	32.74	26.25	32.11	-18.25	18	-12.50	-51.83	17.98	-33.75	-6.14	-52.83	18.01	-32.31	-	0.00
GRIT Investment Trust	GRIT Investment Trust	Commodities & Natural Resources	GBX	1.75	1.03	9.60	-89.32	0	-71.92	-96.27	-97.84	-	0.00	0.00	-87.37	-	-	0.00
Riverstone Energy	Riverstone Investment Group	Commodities & Natural Resources	GBX	538.42	618.00	1,276.00	-51.57	0	-2.52	148.19	-49.67	-35.96	-2.45	186.10	-20.94	27.60	-	0.00
<b>Environmental</b>	<b>Weighted average</b>	<b>Environmental</b>	-	-	-	-	<b>-10.46</b>	<b>7</b>	<b>-15.66</b>	<b>-7.69</b>	<b>32.75</b>	-	<b>-9.77</b>	<b>7.92</b>	<b>45.52</b>	-	-	<b>1.11</b>
Impax Environmental Markets	Impax Asset Management	Environmental	GBX	1,138.02	336.00	366.32	-8.28	7	-17.44	-8.77	33.29	152.52	-12.40	6.24	44.64	144.63	9.86	1.19
Jupiter Green Investment Trust	Jupiter Unit Trust Managers	Environmental	GBX	45.49	182.50	212.87	-14.27	8	-3.95	-14.11	11.84	43.39	-10.64	-2.51	19.83	60.61	-0.31	0.29
Menhaden Resource Efficiency	Frostrow Capital	Environmental	GBX	118.40	95.00	149.82	-36.59	0	1.46	9.22	35.96	-	13.89	26.58	62.56	-	-	0.42
<b>Financials &amp; Financial Innovation</b>	<b>Weighted average</b>	<b>Financials &amp; Financial Innovation</b>	-	-	-	-	-	-	-	-	-	-	-	-	-	-	-	-
Augmentum Fintech	Augmentum Capital	Financials & Financial Innovation	GBX	270.68	81.90	158.90	-48.46	0	-9.90	-32.03	-13.70	-	2.52	33.19	52.79	-	-	0.00
Polar Capital Global Financials	Polar Capital Holdings	Financials & Financial Innovation	GBX	539.65	131.00	151.28	-13.41	4	-8.94	34.98	17.99	70.27	-2.53	41.06	28.64	97.23	2.67	3.40

Company name	Management group	AIC sector	Traded currency	Total assets (m)	Last close price	NAV	Discount / premium (%)	Gearing (%)	SPTR 1yr (%)	SPTR 3yr (%)	SPTR 5yr (%)	SPTR 10yr (%)	NAVTR 1yr (%)	NAVTR 3yr (%)	NAVTR 5yr (%)	NAVTR 10yr (%)	5yr div grth (%pa)	Div yld (%)
Infrastructure	Weighted average	Infrastructure	-	-	-	-	-23.28	3	-14.39	-10.23	9.40	94.34	5.57	29.82	48.13	170.20	2.46	6.56
3i Infrastructure	3i Investments	Infrastructure	GBX	3,340.17	299.00	352.38	-15.15	6	-1.39	11.81	45.18	195.75	11.58	51.10	86.58	293.46	4.62	3.98
BBGI Global Infrastructure S.A.	BBGI Global Infrastructure S.A.	Infrastructure	GBX	1,048.28	127.20	146.60	-13.24	0	-15.36	-15.43	5.51	72.04	3.87	33.15	47.16	138.76	2.85	6.23
Cordiant Digital Infrastructure	Cordiant Capital	Infrastructure	GBX	877.04	63.40	113.75	-44.26	0	-23.28	-	-	-	9.42	-	-	-	-	6.31
Digital 9 Infrastructure	Triple Point Investment Management	Infrastructure	GBX	879.69	46.65	101.68	-54.12	0	-48.40	-	-	-	0.27	-	-	-	-	9.65
GCP Infrastructure Investments	Gravis Capital Management	Infrastructure	GBX	1,113.00	61.40	110.41	-44.39	14	-30.34	-31.20	-31.81	8.03	3.65	29.26	37.32	113.13	-1.63	11.40
HICL Infrastructure	InfraRed Capital Partners	Infrastructure	GBX	3,364.57	119.20	160.13	-25.56	0	-22.53	-21.00	-3.23	49.17	2.02	21.52	33.06	125.38	1.00	6.92
International Public Partnerships	Amber Infrastructure Group	Infrastructure	GBX	2,972.03	116.40	153.97	-24.40	0	-18.57	-19.77	-3.04	47.59	3.73	23.17	38.33	113.40	2.56	6.98
Pantheon Infrastructure	Pantheon Ventures	Infrastructure	GBX	475.45	76.40	100.38	-23.89	0	-16.48	-	-	-	5.03	-	-	-	-	5.24
Sequoia Economic Infrastructure Income	Sequoia Investment Management	Infrastructure	GBX	1,619.80	77.90	91.77	-15.11	4	2.08	-8.38	-2.11	-	7.23	13.13	24.75	-	1.81	8.42
Farmland & Forestry	Weighted average	Farmland & Forestry	-	-	-	-	-	-	-	-	-	-	-	-	-	-	-	-
Foresight Sustainable Forestry	Foresight Group	Farmland & Forestry	GBX	186.68	72.40	108.50	-33.27	0	-30.72	-	-	-	3.33	-	-	-	-	0.00

Company name	Management group	AIC sector	Traded currency	Total assets (m)	Last close price	NAV	Discount / premium (%)	Gearing (%)	SPTR 1yr (%)	SPTR 3yr (%)	SPTR 5yr (%)	SPTR 10yr (%)	NAVTR 1yr (%)	NAVTR 3yr (%)	NAVTR 5yr (%)	NAVTR 10yr (%)	5yr div grth (%pa)	Div yld (%)
Renewable Energy Infrastructure	Weighted average	Renewable Energy Infrastructure	-	-	-	-	-24.50	7	-15.04	-4.17	19.74	99.41	5.25	45.49	71.19	165.60	2.40	7.70
Aquila Energy Efficiency Trust	Aquila Capital Investment	Renewable Energy Infrastructure	GBX	95.26	56.25	95.26	-40.95	0	-20.32	-	-	-	-0.35	-	-	-	-	8.89
Aquila European Renewables	Aquila Capital Investment	Renewable Energy Infrastructure	EUR	395.55	0.78	1.05	-25.91	0	-5.70	-16.60	-	-	-0.64	23.54	-	-	-	7.11
Asian Energy Impact Trust	Thomas Lloyd Global Asset Management	Renewable Energy Infrastructure	USD	177.48	1.05	1.01	8,215.19	0	8,333.59	-	-	-	2.56	-	-	-	-	0.03
Atrato Onsite Energy	Atrato Partners	Renewable Energy Infrastructure	GBX	141.39	72.70	94.26	-22.87	0	-17.54	-	-	-	6.71	-	-	-	-	6.88
Bluefield Solar Income Fund	Bluefield Partners	Renewable Energy Infrastructure	GBX	845.17	113.00	138.22	-18.25	0	-7.54	4.44	25.51	110.17	4.99	49.04	72.22	170.78	2.97	7.79
Downing Renewables & Infrastructure	Downing	Renewable Energy Infrastructure	GBX	216.04	92.00	118.48	-22.35	0	-12.34	-	-	-	4.82	-	-	-	-	5.85
Ecofin US Renewables Infrastructure	Ecofin Advisors	Renewable Energy Infrastructure	USD	127.45	0.59	0.92	-36.08	0	-27.58	-	-	-	1.44	-	-	-	-	5.93
Foresight Solar Fund	Foresight Group	Renewable Energy Infrastructure	GBX	706.17	87.00	118.72	-26.72	0	-14.45	5.08	8.82	58.34	0.69	53.19	54.75	120.21	2.41	8.68
Gore Street Energy Storage	Gore Street Capital	Renewable Energy Infrastructure	GBX	549.84	67.00	114.22	-41.34	0	-35.52	-24.01	-5.23	-	11.18	46.70	65.57	-	-	11.19
Greencoat Renewables	Schroders Greencoat	Renewable Energy Infrastructure	EUR	1,768.76	0.86	1.14	-23.92	22	-17.27	-14.81	8.20	-	10.17	34.45	59.32	-	0.36	7.43



Company name	Management group	AIC sector	Traded currency	Total assets (m)	Last close price	NAV	Discount / premium (%)	Gearing (%)	SPTR 1yr (%)	SPTR 3yr (%)	SPTR 5yr (%)	SPTR 10yr (%)	NAVTR 1yr (%)	NAVTR 3yr (%)	NAVTR 5yr (%)	NAVTR 10yr (%)	5yr div grth (%pa)	Div yld (%)
Greencoat UK Wind	Schroders Greencoat	Renewable Energy Infrastructure	GBX	4,961.38	135.00	166.60	-18.97	19	-1.89	17.14	34.77	124.77	12.55	62.10	90.96	191.98	3.53	6.49
Gresham House Energy Storage	Gresham House	Renewable Energy Infrastructure	GBX	844.98	84.20	147.35	-42.86	0	-45.40	-11.43	-	-	3.02	73.36	-	-	-	8.73
Harmony Energy Income Trust	Harmony Energy Advisors	Renewable Energy Infrastructure	GBX	260.90	72.50	114.87	-36.89	0	-30.74	-	-	-	-0.80	-	-	-	-	11.03
HydrogenOne Capital Growth	HydrogenOne Capital	Renewable Energy Infrastructure	GBX	129.72	44.95	100.70	-55.36	0	-46.10	-	-	-	4.90	-	-	-	-	0.00
JLEN Environmental Assets Group	Foresight Group	Renewable Energy Infrastructure	GBX	805.05	86.10	121.70	-29.25	0	-26.03	-9.63	11.07	-	2.45	53.56	67.75	-	2.50	8.79
NextEnergy Solar Fund	NextEnergy Capital IM	Renewable Energy Infrastructure	GBX	846.44	77.70	109.74	-29.20	27	-21.86	-10.63	-2.64	-	-5.05	35.00	45.62	-	3.21	10.75
Octopus Renewables Infrastructure	Octopus Renewables Limited	Renewable Energy Infrastructure	GBX	611.49	86.70	108.24	-19.90	0	-12.41	-9.91	-	-	2.83	29.02	-	-	-	6.68
Renewables Infrastructure Group	InfraRed Capital Partners	Renewable Energy Infrastructure	GBX	3,270.19	100.60	131.63	-23.57	0	-18.31	-12.85	14.86	73.20	2.84	39.88	62.71	142.91	1.34	7.14
SDCL Energy Efficiency Income	Sustainable Development Capital	Renewable Energy Infrastructure	GBX	1,106.78	59.00	101.97	-42.14	0	-36.99	-33.53	-	-	1.41	18.03	-	-	-	10.58
Triple Point Energy Transition	Triple Point Investment Management	Renewable Energy Infrastructure	GBX	97.63	55.00	97.62	-43.66	0	-18.51	-36.94	-	-	2.44	15.48	-	-	-	10.00
US Solar Fund	New Energy Solar	Renewable Energy Infrastructure	USD	281.92	0.53	0.85	-37.55	0	-35.47	-32.14	-	-	-6.30	3.64	-	-	-	10.68

Company name	Management group	AIC sector	Traded currency	Total assets (m)	Last close price	NAV	Discount / premium (%)	Gearing (%)	SPTR 1yr (%)	SPTR 3yr (%)	SPTR 5yr (%)	SPTR 10yr (%)	NAVTR 1yr (%)	NAVTR 3yr (%)	NAVTR 5yr (%)	NAVTR 10yr (%)	5yr div grth (%pa)	Div yld (%)
VH Global Sustainable Energy Opportunities	Victory Hill Capital Advisors	Renewable Energy Infrastructure	GBX	464.34	76.80	110.73	-30.64	0	-22.56	-	-	-	2.95	-	-	-	-	7.19
Insurance & Reinsurance Strategies	Weighted average	Insurance & Reinsurance Strategies	-	-	-	-	-24.12	0	97.03	2,899.56	1,548.88	-	50.78	1,788.78	979.73	-	-	0.00
CATCo Reinsurance Opportunities	Markel CATCo Investment Management	Insurance & Reinsurance Strategies	USD	1.80	24.00	15.76	52.26	0	659.06	11,524.20	5,783.95	5,062.24	372.56	5,832.38	2,454.50	2,290.36	-	0.00
CATCo Reinsurance Opportunities C shares	Markel CATCo Investment Management	Insurance & Reinsurance Strategies	USD	8.98	108.00	114.69	-5.84	0	659.06	26,662.80	14,022.50	-	555.24	22,433.10	12,205.70	-	-	0.00
Life Settlement Assets	Acheron Capital	Insurance & Reinsurance Strategies	USD	108.52	1.55	2.18	-28.83	0	15.54	-8.98	32.51	-	3.69	12.87	26.03	-	-	0.00
Leasing	Weighted average	Leasing	-	-	-	-	-20.73	72	9.41	103.10	13.71	56.04	3.49	39.06	60.97	75.53	6.57	17.66
Amedeo Air Four Plus	Amedeo Air Four Plus	Leasing	GBX	1,374.07	41.50	124.86	-66.76	228	40.20	83.65	-34.93	-	13.55	19.98	73.97	-	-3.93	16.27
Doric Nimrod Air Three	Doric Partners	Leasing	GBX	152.38	50.50	31.04	62.67	102	25.80	125.77	12.33	55.82	52.30	41.94	33.86	73.51	0.00	16.34
Doric Nimrod Air Two	Doric Partners	Leasing	GBX	299.93	106.00	112.13	-5.47	37	42.15	170.72	27.59	65.39	32.61	34.65	33.71	108.89	0.00	16.98
DP Aircraft I	DP Aircraft I	Leasing	USD	158.70	0.06	0.19	-67.90	243	33.95	16.24	-93.10	-86.55	-0.57	-71.25	-78.43	-65.83	-	0.00
SLF Realisation Fund	KKV Investment Management	Leasing	GBX	21.15	2.45	5.94	-58.75	0	5.67	86.90	-70.80	-	-35.76	-40.60	-75.31	-	-	283.69
SLF Realisation Fund C shares	KKV Investment Management	Leasing	GBX	8.03	3.94	5.78	-31.92	0	57.84	523.08	146.25	-	-11.61	8.54	-16.29	-	-	450.89

Company name	Management group	AIC sector	Traded currency	Total assets (m)	Last close price	NAV	Discount / premium (%)	Gearing (%)	SPTR 1yr (%)	SPTR 3yr (%)	SPTR 5yr (%)	SPTR 10yr (%)	NAVTR 1yr (%)	NAVTR 3yr (%)	NAVTR 5yr (%)	NAVTR 10yr (%)	5yr div grth (%pa)	Div yld (%)
Taylor Maritime Investments	Taylor Martime	Leasing	USD	434.91	0.86	1.32	-35.08	0	-20.59	-	-	-	-19.07	-	-	-	-	9.36
Tufton Oceanic Assets	Tufton Oceanic	Leasing	USD	403.04	0.97	1.37	-29.05	0	-12.85	45.49	35.02	-	-1.10	75.70	90.60	-	24.35	8.76
Liquidity Funds	Weighted average	Liquidity Funds	-	-	-	-	-	-	-	-	-	-	-	-	-	-	-	-
Invesco Select Trust - Managed Liquidity share	Invesco Asset Management	Liquidity Funds	GBX	1.39	94.50	110.79	-14.70	6	-2.50	-3.97	-2.44	-2.20	5.10	8.16	11.58	12.12	-	1.06
Royalties	Weighted average	Royalties	-	-	-	-	-	-	-	-	-	-	-	-	-	-	-	-
Hipgnosis Songs Fund	Hipgnosis Songs	Royalties	GBX	2,410.11	70.40	150.19	-53.13	25	-16.09	-30.82	-17.98	-	-5.67	33.42	83.53	-	-	7.46
Round Hill Music Royalty Fund	Round Hill Music	Royalties	USD	528.77	1.15	1.30	-11.73	0	60.31	-	-	-	14.01	-	-	-	-	3.93
Technology & Technology Innovation	Weighted average	Technology & Technology Innovation	-	-	-	-	-14.30	0	11.57	1.31	-	-	17.73	14.05	101.37	-	-	0.00
Allianz Technology Trust	Allianz Global Investors	Technology & Technology Innovation	GBX	1,117.42	246.00	284.90	-13.65	0	7.19	-1.60	82.90	373.53	12.34	13.67	107.18	449.24	-	0.00
Polar Capital Technology	Polar Capital Holdings	Technology & Media	GBX	3,142.21	2,145.00	2,508.97	-14.51	0	13.25	2.39	82.40	359.81	19.75	14.17	99.50	440.41	-	0.00
SuperSeed Capital	SuperSeed Ventures	Technology & Technology Innovation	GBX	2.19	85.00	105.14	-19.15	0	-8.11	-	-	-	7.28	-	-	-	-	0.00
Sure Ventures	Shard Capital	Technology & Media	GBX	8.14	87.50	115.40	-24.18	0	-19.35	-8.38	-	-	-7.00	20.46	13.58	-	-	0.00
Infrastructure Securities	Weighted average	Infrastructure Securities	-	-	-	-	-	-	-	-	-	-	-	-	-	-	-	-

Company name	Management group	AIC sector	Traded currency	Total assets (m)	Last close price	NAV	Discount / premium (%)	Gearing (%)	SPTR 1yr (%)	SPTR 3yr (%)	SPTR 5yr (%)	SPTR 10yr (%)	NAVTR 1yr (%)	NAVTR 3yr (%)	NAVTR 5yr (%)	NAVTR 10yr (%)	5yr div grth (%pa)	Div yld (%)
Ecofin Global Utilities and Infrastructure	Ecofin Advisors	Infrastructure Securities	GBX	231.27	153.00	182.16	-16.01	9	-21.90	4.48	49.26	-	-9.47	23.13	57.06	-	4.04	5.10
Premier Miton Global Renewables	Premier Miton	Infrastructure Securities	GBX	37.25	93.50	114.35	-18.23	75	-35.23	-15.33	23.17	17.91	-33.26	-8.32	31.60	26.49	-6.89	7.91
Premier Miton Global Renewables	Premier Miton	Infrastructure Securities	GBX	37.16	108.50	115.29	-5.89	0	0.00	-	-	-	5.00	-	-	-	-	0.00
<b>Debt - Direct Lending</b>	<b>Weighted average</b>	<b>Debt - Direct Lending</b>	<b>-</b>	<b>-</b>	<b>-</b>	<b>-</b>	<b>-27.06</b>	<b>9</b>	<b>-11.66</b>	<b>10.48</b>	<b>11.46</b>	<b>-</b>	<b>5.51</b>	<b>25.55</b>	<b>45.07</b>	<b>-</b>	<b>4.99</b>	<b>9.74</b>
BioPharma Credit	Pharmakon Advisors	Debt - Direct Lending	USD	1,362.81	0.83	1.05	-21.04	0	-12.08	17.34	28.20	-	11.83	35.38	56.42	-	9.56	8.47
GCP Asset Backed Income	Gravis Capital Management	Debt - Direct Lending	GBX	399.73	54.40	93.92	-42.08	0	-29.28	-21.43	-26.24	-	3.81	12.66	27.42	-	0.89	11.63
Pollen Street	Pollen Street Capital	Debt - Direct Lending	GBX	850.31	598.00	907.42	-34.10	41	-6.69	-15.78	-18.11	-	-5.37	11.45	30.06	-	-3.15	10.70
Riverstone Credit Opportunities Income	Riverstone Investment Group	Debt - Direct Lending	USD	97.80	0.87	1.08	-19.69	0	8.53	93.23	-	-	5.83	31.18	-	-	-	9.25
RM Infrastructure Income	RM Capital Markets	Debt - Direct Lending	GBX	126.70	69.25	91.10	-23.99	11	-6.55	8.10	-2.00	-	4.92	21.98	31.58	-	9.13	9.39
VPC Specialty Lending Investments	Victory Park Capital Advisors	Debt - Direct Lending	GBX	258.93	68.40	93.05	-26.49	0	-7.31	43.23	44.77	-	-0.56	24.75	51.95	-	3.30	11.70
<b>Debt - Loans &amp; Bonds</b>	<b>Weighted average</b>	<b>Debt - Loans &amp; Bonds</b>	<b>-</b>	<b>-</b>	<b>-</b>	<b>-</b>	<b>-1.71</b>	<b>8</b>	<b>11.24</b>	<b>17.12</b>	<b>14.23</b>	<b>52.94</b>	<b>10.28</b>	<b>15.85</b>	<b>17.96</b>	<b>54.73</b>	<b>2.75</b>	<b>7.72</b>
CQS New City High Yield Fund	New City Investment Managers	Debt - Loans & Bonds	GBX	275.39	48.40	45.67	5.98	11	3.62	33.11	24.94	66.42	4.66	30.93	28.40	71.74	0.31	9.30

Company name	Management group	AIC sector	Traded currency	Total assets (m)	Last close price	NAV	Discount / premium (%)	Gearing (%)	SPTR 1yr (%)	SPTR 3yr (%)	SPTR 5yr (%)	SPTR 10yr (%)	NAVTR 1yr (%)	NAVTR 3yr (%)	NAVTR 5yr (%)	NAVTR 10yr (%)	5yr div grth (%pa)	Div yld (%)
CVC Income & Growth	CVC Credit Partners	Debt - Loans & Bonds	GBX	230.05	104.75	109.69	-4.50	2	24.64	33.35	19.18	70.20	20.17	32.64	27.75	76.89	3.87	7.16
CVC Income & Growth	CVC Credit Partners	Debt - Loans & Bonds	EUR	230.05	0.92	1.00	-7.97	2	20.63	19.74	7.09	55.45	19.22	28.76	20.79	62.62	1.36	7.63
Henderson Diversified Income	Janus Henderson Investors	Debt - Loans & Bonds	GBX	145.21	65.80	68.91	-4.51	17	8.27	-12.05	5.14	23.81	5.88	-9.64	6.60	34.90	-1.31	6.69
Invesco Bond Income Plus	Invesco Asset Management	Debt - Loans & Bonds	GBX	341.14	160.00	157.45	1.62	18	8.45	4.72	15.11	58.77	7.55	3.47	15.91	53.44	2.38	7.19
M&G Credit Income	M&G Alternatives Investment Management	Debt - Loans & Bonds	GBX	134.25	91.90	95.47	-3.74	0	11.71	22.37	-	-	10.18	13.20	-	-	-	5.82
NB Distressed Debt	Neuberger Berman Europe	Debt - Loans & Bonds	USD	12.11	0.69	0.79	-12.34	0	-7.46	2.12	-29.46	-17.82	0.64	-0.02	-23.11	-29.33	-	4.49
NB Distressed Debt Extended Life shares	Neuberger Berman Europe	Debt - Loans & Bonds	USD	49.12	0.61	1.03	-41.03	0	22.14	60.19	-23.54	-21.38	9.93	44.82	11.53	-1.68	23.78	0.68
NB Distressed Debt New Global shares	Neuberger Berman Europe	Debt - Loans & Bonds	GBX	18.25	33.00	65.60	-49.70	0	-7.04	-23.31	-55.43	-	-0.82	22.94	-25.42	-	40.24	1.00
NB Global Monthly Income Fund	Neuberger Berman Europe	Debt - Loans & Bonds	GBX	57.57	75.10	80.71	-6.95	0	8.52	20.47	12.39	20.77	9.04	8.65	12.57	31.19	10.18	8.65
TwentyFour Select Monthly Income	TwentyFour Asset Management	Debt - Loans & Bonds	GBX	179.49	73.60	73.48	0.16	0	15.06	12.75	14.61	-	14.62	9.08	16.58	-	2.39	10.01
Debt - Structured Finance	Weighted average	Debt - Structured Finance	-	-	-	-	-15.80	1	8.09	31.84	13.96	-	16.38	33.04	29.54	-	0.63	11.21
Blackstone Loan Financing	Blackstone Credit	Debt - Structured Finance	EUR	402.95	0.55	0.91	-39.30	0	-8.40	21.06	10.14	-	10.74	44.87	58.10	-	-4.36	14.48

Company name	Management group	AIC sector	Traded currency	Total assets (m)	Last close price	NAV	Discount / premium (%)	Gearing (%)	SPTR 1yr (%)	SPTR 3yr (%)	SPTR 5yr (%)	SPTR 10yr (%)	NAVTR 1yr (%)	NAVTR 3yr (%)	NAVTR 5yr (%)	NAVTR 10yr (%)	5yr div grth (%pa)	Div yld (%)
Chenavari Toro Income Fund	Chenavari Credit Partners	Debt - Structured Finance	EUR	200.07	0.45	0.65	-31.24	0	3.64	25.01	30.06	-	10.64	22.04	24.11	-	-4.39	14.26
EJF Investments	EJF Investments Manager	Debt - Structured Finance	GBX	123.80	111.00	162.94	-31.88	8	-2.81	22.54	-9.71	-	-9.83	18.89	22.65	-	1.98	9.64
EJF Investments	EJF Investments Manager	Debt - Structured Finance	GBX	123.80	117.00	125.41	-6.71	0	0.43	14.71	-	-	6.97	22.43	-	-	-	0.00
Fair Oaks Income 2021	Fair Oaks Capital	Debt - Structured Finance	USD	243.76	0.54	0.60	-10.71	0	19.91	71.36	27.14	-	22.12	64.64	25.35	-	-6.72	14.81
Marble Point Loan Financing	Investcorp	Debt - Structured Finance	USD	135.79	0.50	0.54	-7.29	19	-1.75	59.15	-1.45	-	21.04	41.64	7.56	-	-	18.05
TwentyFour Income Fund	TwentyFour Asset Management	Debt - Structured Finance	GBX	755.91	95.60	101.08	-5.42	0	10.27	15.91	12.69	60.37	18.83	18.63	24.74	79.65	5.52	8.37
Volta Finance	AXA Investment Managers	Debt - Structured Finance	EUR	239.81	5.08	6.56	-22.52	0	19.91	67.80	15.77	116.23	25.90	37.64	18.15	101.87	-3.09	10.43
<b>Property - Debt</b>	<b>Weighted average</b>	<b>Property - Debt</b>	<b>-</b>	<b>-</b>	<b>-</b>	<b>-</b>	<b>-17.92</b>	<b>9</b>	<b>3.00</b>	<b>21.67</b>	<b>12.31</b>	<b>76.04</b>	<b>6.01</b>	<b>17.75</b>	<b>31.89</b>	<b>96.17</b>	<b>-0.85</b>	<b>7.76</b>
Alpha Real Trust	Alpha Real Capital	Property - Debt	GBX	135.15	122.50	215.59	-43.18	0	-4.32	-13.60	1.01	196.32	0.30	8.57	32.41	141.19	10.76	3.27
Develop North	Tier One Capital	Property - Debt	GBX	21.41	81.50	79.54	2.47	0	-0.62	8.37	-1.60	-	0.89	10.15	6.80	-	-0.58	4.91
ICG-Longbow Senior Secured UK Property Debt Invest	Longbow Real Estate Capital	Property - Debt	GBX	48.18	22.85	39.72	-42.47	0	-39.81	-44.82	-53.85	-38.29	-19.21	-34.23	-26.56	-0.29	-9.71	24.51
Real Estate Credit Investments	Cheyne Capital	Property - Debt	GBX	440.08	129.00	148.76	-13.28	24	9.03	33.92	16.42	76.11	8.22	27.33	33.25	100.33	0.00	9.30

Company name	Management group	AIC sector	Traded currency	Total assets (m)	Last close price	NAV	Discount / premium (%)	Gearing (%)	SPTR 1yr (%)	SPTR 3yr (%)	SPTR 5yr (%)	SPTR 10yr (%)	NAVTR 1yr (%)	NAVTR 3yr (%)	NAVTR 5yr (%)	NAVTR 10yr (%)	5yr div grth (%pa)	Div yld (%)
Starwood European Real Estate Finance	Starwood European Finance Partners	Property - Debt	GBX	415.15	88.20	104.94	-15.96	0	3.02	24.69	17.29	60.19	9.13	19.12	38.68	90.17	-3.29	6.24
Property - Europe	Weighted average	Property - Europe	-	-	-	-	-47.86	46	-24.87	-37.72	-40.89	-	-18.60	-4.76	10.61	-	-	8.61
abrdn European Logistics Income	abrdn	Property - Europe	GBX	527.13	51.00	93.88	-45.68	32	-30.05	-43.21	-37.35	-	-9.73	5.15	23.25	-	-	9.39
Phoenix Spree Deutschland	QSix	Property - Europe	GBX	530.41	156.00	307.27	-49.23	76	-40.91	-48.08	-53.24	-	-37.56	-29.94	-11.79	-	3.55	4.04
Schroder European Real Estate	Schroder Real Estate Management	Property - Europe	GBX	215.78	66.20	116.50	-43.18	15	-13.80	9.86	-15.66	-	-3.05	6.28	31.13	-	6.78	9.62
Tritax Eurobox	Tritax Management	Property - Europe	EUR	1,318.66	0.52	1.02	-49.73	48	-18.23	-42.08	-44.22	-	-19.21	-2.88	8.48	-	-	9.71
Property - Rest of World	Weighted average	Property - Rest of World	-	-	-	-	-	-	-	-	-	-	-	-	-	-	-	-
Ceiba Investments	Ceiba Investments	Property - Rest of World	GBX	118.84	32.50	86.32	-62.35	0	-26.14	-53.90	-66.14	-	-14.14	-13.44	-27.26	-	-	0.00
Macau Property Opportunities	Sniper Capital	Property - Rest of World	GBX	157.99	44.80	116.00	-61.38	0	-9.68	-36.45	-76.07	-75.72	-21.62	-35.20	-53.41	-51.23	-	0.00
Property - UK Commercial	Weighted average	Property - UK Commercial	-	-	-	-	-30.65	23	-16.55	1.90	-13.22	8.20	-11.22	15.35	21.05	87.26	3.03	7.89
abrdn Property Income Trust	abrdn	Property - UK Commercial	GBX	430.68	46.60	84.19	-44.65	26	-9.29	5.18	-31.16	21.90	-16.19	21.34	15.73	139.93	-3.42	8.58
AEW UK REIT	AEW UK Investment Management	Property - UK Commercial	GBX	216.05	93.70	104.70	-10.51	14	14.12	56.11	53.57	-	-6.30	43.91	57.51	-	0.01	8.54

Company name	Management group	AIC sector	Traded currency	Total assets (m)	Last close price	NAV	Discount / premium (%)	Gearing (%)	SPTR 1yr (%)	SPTR 3yr (%)	SPTR 5yr (%)	SPTR 10yr (%)	NAVTR 1yr (%)	NAVTR 3yr (%)	NAVTR 5yr (%)	NAVTR 10yr (%)	5yr div grth (%pa)	Div yld (%)
Alternative Income REIT	M7 Real Estate Financial Services	Property - UK Commercial	GBX	108.35	62.30	84.20	-26.01	49	-7.54	36.77	0.75	-	-7.32	21.72	19.73	-	13.21	9.70
Balanced Commercial Property	Columbia Threadneedle	Property - UK Commercial	GBX	1,130.34	63.20	117.13	-46.04	29	-19.52	20.00	-40.28	-14.50	-12.68	11.87	-1.04	75.39	-4.36	7.59
Channel Islands Property	Ravenscroft	Property - UK Commercial	GBX	278.75	-	99.50	-	70	-	-	-	-	-0.26	17.42	36.61	48.72	-	-
Custodian Property Income REIT	Custodian Capital	Property - UK Commercial	GBX	540.23	82.10	96.71	-15.11	24	-1.34	15.83	-8.21	-	-7.39	20.56	19.18	-	-3.14	6.70
Ediston Property	Ediston Real Estate	Property - UK Commercial	GBX	281.17	69.20	80.82	-14.38	15	12.28	61.64	-7.74	-	-9.49	11.40	-8.03	-	-2.54	7.23
Life Science REIT	Ironstone Asset Management	Property - UK Commercial	GBX	315.62	61.40	90.18	-31.91	0	-10.48	-	-	-	-8.04	-	-	-	-	6.51
LXI REIT	LJ Capital	Property - UK Commercial	GBX	2,305.18	85.75	120.46	-28.81	5	-25.16	-8.97	-9.01	-	-7.96	15.82	34.84	-	11.45	7.70
Regional REIT	ARA Europe Private Markets	Property - UK Commercial	GBX	778.30	28.15	76.56	-63.23	78	-52.36	-40.49	-56.44	-	-19.53	-5.07	-0.89	-	-3.41	18.65
Schroder Real Estate	Schroder Real Estate Management	Property - UK Commercial	GBX	480.68	40.50	65.20	-37.88	41	-3.89	58.74	-9.10	35.85	-9.62	28.53	15.48	117.18	5.63	8.05
Supermarket Income REIT	Atrato Capital	Property - UK Commercial	GBX	1,687.49	72.60	97.05	-25.19	37	-23.84	-16.06	-4.06	-	-10.26	17.32	39.07	-	1.76	8.35
UK Commercial Property REIT	abrdrn	Property - UK Commercial	GBX	1,323.17	52.70	81.32	-35.19	17	-8.05	-9.12	-23.42	11.87	-16.84	8.86	4.09	77.95	-1.86	6.36



Company name	Management group	AIC sector	Traded currency	Total assets (m)	Last close price	NAV	Discount / premium (%)	Gearing (%)	SPTR 1yr (%)	SPTR 3yr (%)	SPTR 5yr (%)	SPTR 10yr (%)	NAVTR 1yr (%)	NAVTR 3yr (%)	NAVTR 5yr (%)	NAVTR 10yr (%)	5yr div grth (%pa)	Div yld (%)
Value and Indexed Property Income	OLIM Property Limited	Property - UK Commercial	GBX	152.36	169.50	246.17	-31.14	33	-14.54	36.23	-14.60	3.18	-14.69	30.72	-0.45	22.28	2.50	7.61
Property - UK Healthcare	Weighted average	Property - UK Healthcare	-	-	-	-	-	-	-	-	-	-	-	-	-	-	-	-
Impact Healthcare REIT	Impact Health Partners	Property - UK Healthcare	GBX	587.33	82.80	114.98	-27.98	19	-15.38	0.12	9.21	-	4.23	25.49	50.53	-	3.91	8.18
Target Healthcare REIT	Target Fund Managers	Property - UK Healthcare	GBX	923.65	72.10	113.59	-36.53	27	-10.21	-18.24	-11.53	19.68	6.72	25.80	45.02	128.04	-0.85	7.77
Property - UK Residential	Weighted average	Property - UK Residential	-	-	-	-	-53.69	34	-26.94	-22.79	-19.27	-	8.68	35.64	50.14	-	5.69	9.53
Civitas Social Housing	Civitas Investment Management	Property - UK Residential	GBX	1,017.21	79.80	109.77	-27.30	46	0.00	0.00	0.00	-	-1.08	16.85	31.26	-	12.88	-
Ground Rents Income Fund	Schroder Real Estate Management	Property - UK Residential	GBX	112.90	33.90	96.06	-64.71	19	-28.17	-47.70	-61.82	-51.32	3.32	-1.19	-4.29	35.24	-5.42	8.85
Home REIT	AEW UK Investment Management	Property - UK Residential	GBX	1,222.94	38.05	123.58	-69.21	9	-53.10	-57.95	-	-	7.16	35.56	-	-	-	14.45
PRS REIT	Sigma Capital	Property - UK Residential	GBX	1,017.61	72.20	120.48	-40.07	50	-14.03	14.90	-9.95	-	6.74	43.43	54.95	-	-4.36	5.54
Residential Secure Income REIT	Gresham House	Property - UK Residential	GBX	372.78	53.60	100.55	-46.70	93	-35.72	-28.42	-22.98	-	-13.68	6.94	20.81	-	-	9.63
Triple Point Social Housing REIT	Triple Point Investment Management	Property - UK Residential	GBX	777.69	54.20	131.30	-58.72	44	-9.78	-36.89	-28.42	-	23.02	42.68	64.23	-	26.07	10.07
Property Securities	Weighted average	Property Securities	-	-	-	-	-	-	-	-	-	-	-	-	-	-	-	-

Company name	Management group	AIC sector	Traded currency	Total assets (m)	Last close price	NAV	Discount / premium (%)	Gearing (%)	SPTR 1yr (%)	SPTR 3yr (%)	SPTR 5yr (%)	SPTR 10yr (%)	NAVTR 1yr (%)	NAVTR 3yr (%)	NAVTR 5yr (%)	NAVTR 10yr (%)	5yr div grth (%pa)	Div yld (%)
TR Property Investment Trust	Columbia Threadneedle	Property Securities	GBX	1,127.56	267.50	295.64	-9.52	12	-9.48	-13.22	-18.40	59.18	-3.69	-12.93	-11.48	68.63	4.90	5.79
VCT AIM Quoted	Weighted average	VCT AIM Quoted	-	-	-	-	-7.54	0	-16.45	-21.88	-9.09	36.95	-17.42	-25.00	-10.43	27.85	-2.28	7.45
Amati AIM VCT	Amati Global Investors	VCT AIM Quoted	GBX	141.27	87.50	93.98	-6.90	0	-25.49	-36.15	-19.73	34.95	-26.69	-36.81	-20.56	34.95	-3.81	8.00
Hargreave Hale AIM VCT	Canaccord Genuity	VCT AIM Quoted	GBX	146.86	41.60	43.95	-5.35	0	-19.55	-26.78	-22.41	12.68	-20.98	-27.56	-21.24	5.69	-5.59	7.21
New Century AIM VCT 2	Oberon Investments	VCT AIM Quoted	GBX	2.29	47.25	41.14	14.85	0	-7.18	50.59	-2.64	114.59	-10.42	-8.19	-1.78	49.26	-5.96	5.29
Octopus AIM VCT	Octopus Investments	VCT AIM Quoted	GBX	109.59	59.00	61.80	-4.53	0	-17.32	-28.80	-21.75	4.55	-18.59	-29.73	-25.38	0.32	-1.89	8.47
Octopus AIM VCT 2	Octopus Investments	VCT AIM Quoted	GBX	73.86	44.60	45.80	-2.62	0	-14.31	-26.55	-17.95	9.52	-17.92	-28.55	-20.21	3.45	0.93	8.07
Unicorn AIM VCT	Unicorn Asset Management	VCT AIM Quoted	GBX	203.86	101.50	117.92	-13.92	0	-7.71	-2.35	20.53	87.12	-7.71	-11.33	15.87	62.35	0.00	6.40
VCT AIM Quoted Pre Qualifying	Weighted average	VCT AIM Quoted Pre Qualifying	-	-	-	-	-	-	-	-	-	-	-	-	-	-	-	-
Thames Ventures VCT 2 AIM shares	Foresight Group	VCT AIM Quoted Pre Qualifying	GBX	2.69	100.50	99.90	0.60	0	0.25	-	-	-	0.91	-	-	-	-	0.00
VCT Generalist	Weighted average	VCT Generalist	-	-	-	-	-5.96	0	-2.90	27.05	32.21	86.72	-3.19	19.67	25.83	67.81	-2.26	7.40
Albion Development VCT	Albion Capital Group	VCT Generalist	GBX	122.78	85.00	90.63	-6.21	0	2.86	35.38	44.85	122.88	4.32	35.07	45.73	122.17	2.43	5.31
Albion Enterprise VCT	Albion Capital Group	VCT Generalist	GBX	126.53	118.50	125.44	-5.53	0	3.72	35.32	44.57	130.50	4.23	33.88	43.64	118.66	5.35	5.48

Company name	Management group	AIC sector	Traded currency	Total assets (m)	Last close price	NAV	Discount / premium (%)	Gearing (%)	SPTR 1yr (%)	SPTR 3yr (%)	SPTR 5yr (%)	SPTR 10yr (%)	NAVTR 1yr (%)	NAVTR 3yr (%)	NAVTR 5yr (%)	NAVTR 10yr (%)	5yr div grth (%pa)	Div yld (%)
Albion Technology & General VCT	Albion Capital Group	VCT Generalist	GBX	136.09	72.50	77.00	-5.85	0	1.11	29.77	45.24	79.58	3.71	13.35	39.72	73.94	-0.05	5.50
Albion VCT	Albion Capital Group	VCT Generalist	GBX	70.12	46.80	50.28	-6.92	0	0.54	22.97	27.63	97.91	0.36	19.05	21.09	84.27	-7.97	5.66
Baronsmead Second Venture Trust	Gresham House	VCT Generalist	GBX	208.77	55.00	55.49	-0.88	0	-0.64	3.42	0.93	45.85	-8.22	-3.78	-3.07	29.04	-4.36	10.91
Baronsmead Venture Trust	Gresham House	VCT Generalist	GBX	195.74	52.50	53.27	-1.45	0	-0.25	0.90	0.06	46.44	-7.14	-4.35	-5.93	30.22	-2.42	10.95
British Smaller Companies VCT	YFM Private Equity	VCT Generalist	GBX	201.71	78.00	83.70	-6.81	0	7.95	66.68	74.28	162.69	6.22	49.79	69.04	135.47	-7.00	7.69
British Smaller Companies VCT 2	YFM Private Equity	VCT Generalist	GBX	131.39	53.50	57.48	-6.93	0	5.97	61.49	76.13	112.11	6.27	48.48	59.53	100.49	0.00	5.61
Calculus VCT	Calculus Capital	VCT Generalist	GBX	38.55	60.00	63.60	-5.66	0	8.53	15.64	9.04	-	1.79	13.59	-1.00	-	-5.91	4.92
Crown Place VCT	Albion Capital Group	VCT Generalist	GBX	95.06	31.50	33.82	-6.85	0	3.32	28.96	43.85	120.10	5.27	31.69	42.37	118.41	-4.01	5.17
Foresight Enterprise VCT	Foresight Group	VCT Generalist	GBX	145.69	60.50	63.40	-4.57	0	10.67	65.08	60.96	60.61	4.77	37.95	25.53	16.69	-	5.45
Foresight VCT	Foresight Group	VCT Generalist	GBX	203.40	75.50	81.90	-7.81	0	10.58	68.78	69.06	94.03	5.54	51.42	51.80	73.19	-13.34	5.83
Kings Arms Yard VCT	Albion Capital Group	VCT Generalist	GBX	108.82	19.70	21.00	-6.20	0	2.13	36.85	30.68	107.82	3.12	34.40	37.00	105.92	-2.64	5.33
Maven Income and Growth VCT	Maven Capital Partners	VCT Generalist	GBX	60.97	39.00	41.26	-5.47	0	0.05	13.75	16.20	60.61	0.94	7.86	12.94	55.45	-16.85	5.77
Maven Income and Growth VCT 3	Maven Capital Partners	VCT Generalist	GBX	60.99	50.00	53.16	-5.94	0	-1.29	23.36	16.50	53.27	0.34	11.34	13.22	52.31	-26.33	6.30

Company name	Management group	AIC sector	Traded currency	Total assets (m)	Last close price	NAV	Discount / premium (%)	Gearing (%)	SPTR 1yr (%)	SPTR 3yr (%)	SPTR 5yr (%)	SPTR 10yr (%)	NAVTR 1yr (%)	NAVTR 3yr (%)	NAVTR 5yr (%)	NAVTR 10yr (%)	5yr div grth (%pa)	Div yld (%)
Maven Income and Growth VCT 4	Maven Capital Partners	VCT Generalist	GBX	86.49	60.00	63.17	-5.02	0	0.74	20.88	20.95	60.18	-1.38	9.36	13.06	38.96	-21.34	6.25
Maven Income and Growth VCT 5	Maven Capital Partners	VCT Generalist	GBX	64.91	31.60	33.22	-4.88	0	-0.50	32.40	20.96	146.58	-1.02	13.71	12.73	79.70	1.81	11.08
Mobeus Income & Growth 2 VCT	Gresham House	VCT Generalist	GBX	65.59	63.50	67.16	-5.45	0	-2.42	45.28	78.72	204.25	0.57	28.75	58.68	134.34	7.63	20.47
Mobeus Income & Growth 4 VCT	Gresham House	VCT Generalist	GBX	81.39	67.00	73.97	-9.43	0	-2.98	56.56	98.77	191.66	5.22	43.27	81.92	154.41	6.58	16.42
Mobeus Income & Growth VCT	Gresham House	VCT Generalist	GBX	92.13	53.00	55.62	-4.71	0	-1.44	52.85	111.49	228.49	-4.32	33.56	77.00	178.01	6.30	17.92
Molten Ventures VCT	Molten Ventures	VCT Generalist	GBX	124.32	48.00	51.18	-6.21	0	-8.29	40.07	19.63	109.41	-0.65	23.00	10.92	67.36	-8.97	3.13
Northern 2 VCT	Mercia Asset Management	VCT Generalist	GBX	112.19	55.00	57.70	-4.68	0	0.60	40.21	38.52	101.15	1.37	11.87	25.24	79.24	-9.71	6.00
Northern 3 VCT	Mercia Asset Management	VCT Generalist	GBX	114.89	85.00	89.10	-4.60	0	1.18	38.11	34.69	105.16	1.78	14.77	24.22	79.84	-3.93	5.29
Northern Venture Trust	Mercia Asset Management	VCT Generalist	GBX	105.49	56.50	60.69	-6.90	0	0.80	34.04	33.91	93.02	1.90	11.59	24.63	82.75	-7.79	7.08
Octopus Apollo VCT	Octopus Investments	VCT Generalist	GBX	390.16	50.50	53.78	-6.09	0	8.87	47.81	57.40	86.30	8.38	47.34	51.23	70.92	-4.07	5.15
Octopus Titan VCT	Octopus Investments	VCT Generalist	GBX	1,074.18	65.00	69.92	-7.04	0	-20.76	-6.92	2.68	47.40	-20.14	-5.15	1.37	33.42	0.00	7.69
Pembroke VCT B shares	Pembroke Investment Managers	VCT Generalist	GBX	213.92	104.50	111.92	-6.63	0	0.87	22.43	45.08	-	-0.94	24.96	29.33	-	0.00	4.78
ProVen Growth and Income VCT	Beringea	VCT Generalist	GBX	156.96	48.70	51.40	-5.25	0	-4.90	13.86	-1.87	36.30	-5.92	11.37	-3.94	31.18	10.20	7.19

Company name	Management group	AIC sector	Traded currency	Total assets (m)	Last close price	NAV	Discount / premium (%)	Gearing (%)	SPTR 1yr (%)	SPTR 3yr (%)	SPTR 5yr (%)	SPTR 10yr (%)	NAVTR 1yr (%)	NAVTR 3yr (%)	NAVTR 5yr (%)	NAVTR 10yr (%)	5yr div grth (%pa)	Div yld (%)
ProVen VCT	Beringea	VCT Generalist	GBX	161.52	59.50	62.70	-5.10	0	-2.01	13.81	-0.34	58.11	-2.45	10.32	-3.20	49.42	8.45	6.30
Puma VCT 13	Puma Investments	VCT Generalist	GBX	124.60	127.50	140.77	-9.43	0	0.38	72.08	-	-	6.68	42.67	72.32	-	-	7.84
Seneca Growth Capital VCT B shares	Seneca Partners Limited	VCT Generalist	GBX	15.54	70.50	74.66	-5.58	0	-6.44	-8.31	-	-	-6.33	-8.65	-12.45	-	-	4.26
Thames Ventures VCT 1	Foresight Group	VCT Generalist	GBX	88.84	48.00	50.20	-4.38	0	-10.09	5.65	-17.86	22.22	-10.65	2.24	-25.92	-8.92	-16.06	5.21
Thames Ventures VCT 2 D shares	Foresight Group	VCT Generalist	GBX	0.20	3.25	2.50	30.00	0	0.00	-2.27	82.84	35.10	-3.85	-11.73	-17.36	-3.26	-	0.00
Thames Ventures VCT 2 DP67 shares	Foresight Group	VCT Generalist	GBX	2.81	14.00	25.10	-44.22	0	0.00	-20.00	5.30	-1.35	2.87	36.41	-19.87	13.62	-	0.00
Thames Ventures VCT 2 Ventures shares	Foresight Group	VCT Generalist	GBX	28.67	52.50	53.85	-2.51	0	-17.50	1.38	-35.97	-	-19.56	-2.23	-32.83	-	-	2.38
The Income & Growth VCT	Gresham House	VCT Generalist	GBX	113.12	67.00	73.09	-8.33	0	-0.11	57.88	96.62	190.05	4.70	44.15	77.92	141.57	12.89	16.42
Triple Point Venture VCT Venture shares	Triple Point Investment Management	VCT Generalist	GBX	53.75	92.50	99.61	-7.14	0	-7.90	4.26	-	-	-3.23	19.97	-	-	-	5.41
<b>VCT Generalist Pre Qualifying</b>	<b>Weighted average</b>	<b>VCT Generalist Pre Qualifying</b>	-	-	-	-	-2.72	0	-	-	-	-	-	-	-	-	-	-
Guinness VCT	Guinness Global Investors	VCT Generalist Pre Qualifying	GBX	4.34	95.00	97.67	-2.73	0	-	-	-	-	-	-	-	-	-	-
Octopus Future Generations VCT	Octopus Investments	VCT Generalist Pre Qualifying	GBP	45.39	0.91	0.94	-3.50	0	-9.00	-	-	-	-1.87	-	-	-	-	0.00

Company name	Management group	AIC sector	Traded currency	Total assets (m)	Last close price	NAV	Discount / premium (%)	Gearing (%)	SPTR 1yr (%)	SPTR 3yr (%)	SPTR 5yr (%)	SPTR 10yr (%)	NAVTR 1yr (%)	NAVTR 3yr (%)	NAVTR 5yr (%)	NAVTR 10yr (%)	5yr div grth (%pa)	Div yld (%)
Puma Alpha VCT	Puma Investments	VCT Generalist Pre Qualifying	GBX	29.84	117.50	119.36	-1.56	0	0.00	22.50	-	-	-1.39	19.19	-	-	-	4.26
VCT Specialist: Environmental	Weighted average	VCT Specialist: Environmental	-	-	-	-	-	-	-	-	-	-	-	-	-	-	-	-
Gresham House Renewable Energy VCT 1	Gresham House	VCT Specialist: Environmental	GBX	23.39	70.00	91.68	-23.64	0	0.57	-8.48	-7.90	59.62	19.06	8.80	6.02	62.51	-	2.86
Gresham House Renewable Energy VCT 2	Gresham House	VCT Specialist: Environmental	GBX	18.89	69.00	72.28	-4.53	0	0.59	-8.56	-8.01	59.09	-1.25	-10.11	-12.51	33.66	24.59	23.91
VCT Specialist: Environmental Pre Qualifying	Weighted average	VCT Specialist: Environmental Pre Qualifying	-	-	-	-	-	-	-	-	-	-	-	-	-	-	-	-
Foresight Technology VCT FWT shares	Foresight Group	VCT Specialist: Environmental Pre Qualifying	GBX	24.90	100.00	101.20	-1.19	0	0.00	-	-	-	3.90	4.22	-	-	-	0.00
VCT Specialist: Healthcare & Biotechnology	Weighted average	VCT Specialist: Healthcare & Biotechnology	-	-	-	-	-	-	-	-	-	-	-	-	-	-	-	-
Seneca Growth Capital VCT	Seneca Partners Limited	VCT Specialist: Healthcare & Biotechnology	GBX	2.09	15.50	25.80	-39.92	0	-18.89	-22.12	75.37	10.89	11.02	1.43	56.67	-7.23	-	25.81
Thames Ventures VCT 2 Healthcare shares	Downing	VCT Specialist: Healthcare & Biotechnology	GBX	13.16	54.50	55.85	-2.42	0	-26.81	-5.92	-37.43	-	-20.36	-5.62	-28.05	-	-	2.29
VCT Specialist: Technology	Weighted average	VCT Specialist: Technology	-	-	-	-	-9.79	0	-5.80	-12.74	-46.13	-22.66	-	-3.17	-32.99	-33.48	-	2.41

Company name	Management group	AIC sector	Traded currency	Total assets (m)	Last close price	NAV	Discount / premium (%)	Gearing (%)	SPTR 1yr (%)	SPTR 3yr (%)	SPTR 5yr (%)	SPTR 10yr (%)	NAVTR 1yr (%)	NAVTR 3yr (%)	NAVTR 5yr (%)	NAVTR 10yr (%)	5yr div grth (%pa)	Div yld (%)
BlackFinch Spring VCT	Blackfinch Investments	VCT Specialist: Technology	GBX	25.88	89.50	93.85	-4.64	0	1.13	-10.50	-	-	5.30	-1.12	-	-	-	0.00
Oxford Technology 2 VCT - OT1 shares	Oxford Technology 2 VCT Managers	VCT Specialist: Technology	GBX	2.31	23.50	42.60	-44.84	0	-14.55	-16.07	-41.25	-76.14	-	17.68	-9.94	-36.47	-	0.00
Oxford Technology 2 VCT - OT2 shares	Oxford Technology 2 VCT Managers	VCT Specialist: Technology	GBX	1.09	17.00	20.50	-17.07	0	-35.85	-15.00	-57.60	40.93	-21.46	-15.64	-29.10	13.64	-	0.00
Oxford Technology 2 VCT - OT3 shares	Oxford Technology 2 VCT Managers	VCT Specialist: Technology	GBX	1.48	17.00	23.60	-27.97	0	-50.00	-44.32	-62.88	-52.58	-	-45.57	-68.36	-64.27	-20.59	35.29
Oxford Technology 2 VCT - OT4 shares	Oxford Technology 2 VCT Managers	VCT Specialist: Technology	GBX	2.93	14.00	25.40	-44.88	0	-58.82	-22.22	-32.49	3.65	-	-11.81	-34.83	-33.19	-12.94	20.83
India / Indian Subcontinent	Weighted average	India / Indian Subcontinent	-	-	-	-	-15.01	3	4.48	57.87	70.01	173.10	2.81	55.76	71.02	181.10	-	0.00
abrdrn New India Investment Trust	abrdrn	India/Indian Subcontinent	GBX	408.04	568.00	714.00	-20.45	9	2.16	22.81	43.04	164.79	-0.68	33.70	51.27	184.53	-	0.00
Ashoka India Equity	White Oak Capital Partners	India	GBX	265.18	227.00	223.33	1.64	0	11.00	111.16	163.95	-	9.14	92.36	153.35	-	-	0.00
India Capital Growth Fund	Ocean Dial Asset Management	India	GBX	164.59	147.00	170.62	-13.84	0	13.08	110.60	85.84	326.09	21.42	96.62	84.38	282.13	-	0.00
JPMorgan Indian	J.P. Morgan Asset Management	India	GBX	777.42	828.00	1,034.47	-19.96	2	0.73	39.39	38.00	141.40	-1.71	45.17	49.20	157.35	-	0.00
Country Specialist	Weighted average	Country Specialist	-	-	-	-	-17.87	0	-1.02	24.50	28.91	247.51	1.26	25.02	34.62	218.63	-	1.08

Company name	Management group	AIC sector	Traded currency	Total assets (m)	Last close price	NAV	Discount / premium (%)	Gearing (%)	SPTR 1yr (%)	SPTR 3yr (%)	SPTR 5yr (%)	SPTR 10yr (%)	NAVTR 1yr (%)	NAVTR 3yr (%)	NAVTR 5yr (%)	NAVTR 10yr (%)	5yr div grth (%pa)	Div yld (%)
Vietnam Enterprise Investments	Dragon Capital	Country Specialist	GBX	1,282.27	518.00	635.00	-18.43	0	-5.65	11.88	15.11	-	-2.61	18.25	25.74	-	-	0.00
VietNam Holding	Dynam Capital	Country Specialist	GBX	86.47	277.00	316.90	-12.59	0	11.69	80.46	41.57	276.35	9.62	53.76	42.08	206.34	-	0.00
VinaCapital Vietnam Opportunity	VinaCapital Investment Management	Country Specialist	GBX	873.45	440.00	549.00	-19.85	0	5.26	43.51	49.66	271.06	6.73	37.20	48.70	236.92	15.46	2.45
Weiss Korea Opportunity Fund	Weiss Asset Management	Country Specialist	GBX	106.86	150.00	154.28	-2.77	0	-5.60	-16.04	20.10	69.35	-3.26	-15.60	21.23	80.53	9.40	3.57
<b>China / Greater China</b>	<b>Weighted average</b>	<b>China / Greater China</b>	-	-	-	-	<b>-13.44</b>	<b>21</b>	<b>8.66</b>	<b>-43.82</b>	<b>10.24</b>	<b>98.78</b>	<b>8.52</b>	<b>-35.83</b>	<b>10.76</b>	<b>103.35</b>	<b>11.80</b>	<b>3.09</b>
abrdn China Investment Company	abrdn	China / Greater China	GBX	229.01	392.00	499.75	-21.56	3	-12.03	-32.70	-14.59	2.44	-1.92	-26.01	-8.09	15.79	-	1.47
Baillie Gifford China Growth	Baillie Gifford	China / Greater China	GBX	152.86	204.00	236.55	-13.76	2	-1.40	-53.06	-24.60	3.79	-0.57	-42.37	-26.84	3.24	-20.93	0.83
Fidelity China Special Situations	Fidelity	China / Greater China	GBX	1,383.16	202.00	229.57	-12.01	28	16.36	-41.71	17.55	131.31	14.38	-33.98	18.04	138.62	12.30	3.09
JPMorgan China Growth & Income	J.P. Morgan Asset Management	China / Greater China	GBX	248.20	225.50	259.92	-13.24	15	-5.26	-58.24	18.66	83.25	-4.40	-50.33	18.31	80.71	31.34	6.07
<b>Property - UK Logistics</b>	<b>Weighted average</b>	<b>Property - UK Logistics</b>	-	-	-	-	<b>-31.21</b>	<b>33</b>	<b>-4.37</b>	<b>-5.83</b>	<b>14.75</b>	-	<b>-16.37</b>	<b>35.98</b>	<b>60.46</b>	-	<b>5.06</b>	<b>5.79</b>
M7 Regional E-Warehouse REIT	M7 Real Estate Financial Services	Property - UK Logistics	GBX	107.14	111.00	86.84	27.82	207	4.63	-	-	-	-16.00	-	-	-	-	7.41
Tritax Big Box REIT	Tritax Management	Property - UK Logistics	GBX	5,063.39	136.80	195.31	-29.96	34	1.32	-2.64	16.86	-	-17.96	39.26	61.46	-	1.81	5.12



Company name	Management group	AIC sector	Traded currency	Total assets (m)	Last close price	NAV	Discount / premium (%)	Gearing (%)	SPTR 1yr (%)	SPTR 3yr (%)	SPTR 5yr (%)	SPTR 10yr (%)	NAVTR 1yr (%)	NAVTR 3yr (%)	NAVTR 5yr (%)	NAVTR 10yr (%)	5yr div grth (%pa)	Div yld (%)
Urban Logistics REIT	Logistics Asset Management	Property - UK Logistics	GBX	970.04	104.20	163.21	-36.16	17	-15.87	-13.24	13.87	-	-7.31	29.48	61.49	-	12.49	7.29
Warehouse REIT	Tilstone Partners	Property - UK Logistics	GBX	791.10	72.50	124.96	-41.98	42	-35.33	-20.98	-1.73	-	-18.36	22.42	51.93	-	20.68	8.83

Should you encounter any content or functionality issues or have any feedback on the enhancements please feel free to contact us at [website@theaic.co.uk](mailto:website@theaic.co.uk). Your feedback is valuable to us and is greatly appreciated

**Disclaimer:** This data has been prepared by Morningstar on behalf of the AIC for information purposes only. It is not an invitation or inducement to engage in investment activity nor does it purport to contain information on which to base investment decisions. Whilst Morningstar have taken all reasonable steps to verify the statistics in this publication, neither the AIC nor Morningstar accept responsibility for any errors or omissions in this publication or for any loss of any nature incurred by any person using this publication, howsoever caused. Investors are advised to seek independent financial advice before making any investment decisions.

## Sign up for monthly updates

Stay informed about investment companies with our regular emails.

### Compass

Compass is the AIC's monthly newsletter for private investors that features views from investment company managers and takes a closer look at topical investment issues.

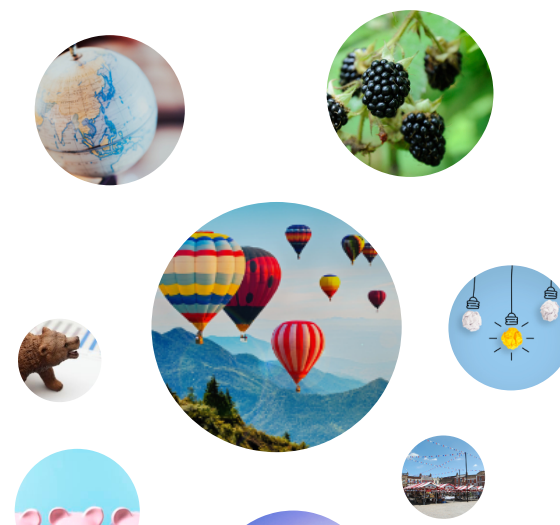
First name



### Investment company statistics

Our monthly industry overview and corporate activity updates include key investment company data such as assets under management by sector, fundraisings and IPOs.

Surname



**Email address**

**Submit**

